

Linens made  
with *you*  
in mind.

**STANDARD**  
TEXTILE est. 1940



Make a lasting impression on your guests.





**Made for rest.**  
***Designed to refresh.***  
**Perfected for relaxation.**

Our linens are made to give your guests the memorable experiences that they deserve.



Artesano Terry Rug

Sheeting and pillows that cradle and comfort your guests, lulling them to a restful, rejuvenating slumber.

Towels that soothe and absorb, refreshing your guests with a plush and cozy embrace.

Robes that pamper and caress, making anytime feel like a relaxing day at the spa.

We make linens with innovations that elevate your guest's experience, while reducing your operational costs.




Lynova®



Rachel by Heidi Weisel





Terry Manufacturing  
in South Carolina

# ***Made in USA***

Made with Integrity. Made with Quality.  
Made in USA.

Building on the proud heritage of a defining period in American manufacturing, Standard Textile is creating an entirely new chapter of growth and opportunity in textile manufacturing.

Made in USA at Standard Textile is the perfect, seamless balance of unwavering integrity and unparalleled quality.

# *Global* Supply Chain

## Global Reach. Personal Impact.

Standard Textile's well-structured vertical integration and global supply chain give you access to leading-edge technology, consistent product quality, and dependable worldwide delivery.

With 24 manufacturing and distribution facilities in 12 countries, including facilities in North America, Europe, the Middle East and Far East, and over 3,000 motivated associates, we're committed to delivering innovative solutions that offer the greatest value to our customers.

The full control of our global supply chain provides an opportunity to innovate at every stage of the development cycle—from fiber engineering, through finished product, to integrated laundry solutions.





# *Innovation* at our C.O.R.E.

Concept. Operation. Results. Execution.

The CORE is our one-of-a-kind, world-class textile development and processing center.

Comprised of four distinct areas: Advanced Concept Development Center, Textile Processing & Operations Center, Performance Measurement & Validation Laboratory, and Prototype Production Center.

Home to the industry's most advanced product development capabilities, we can move a prototype from initial concept to finished product in an efficient and scalable way—finely tuned, fully tested, and ready for use in your guest rooms.





Textile Processing & Operations Center



Performance Measurement  
& Validation Laboratory



Prototype Production Center

Centium Core Technology® is a patented weaving technology unlike anything else on the market today, available exclusively in terry and sheeting products manufactured by Standard Textile.



We weave a soft cotton surface around our multifilament synthetic core, resulting in luxurious feel and unsurpassed durability.

Centium Core Technology® improves product tensile strength, extends service life, and enhances performance.

You get unsurpassed durability, superior cost management, and a luxuriously soft hand that guests will appreciate.



**Centium Core Technology®**





# **Room Ready For You<sup>®</sup> Laundered with Tide<sup>®</sup>**

Take a fresh approach to reducing laundry costs.



Our Room Ready For You® Laundered with Tide® program delivers sheets and towels that are clean, fresh, and ready to use right out of the box.

You save time, labor, and the costs of upfront laundering.

Our proven program protects your investment and helps to preserve the environment.

We launder with P&G ProLine Tide® detergent, which is free of harsh alkalines and phosphates.





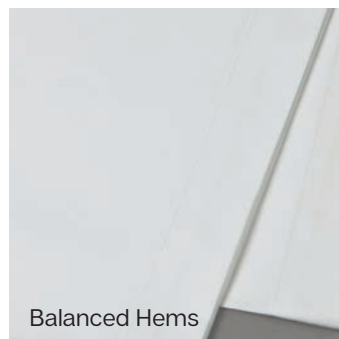
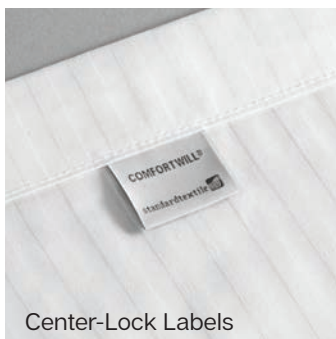
# OneSTEP<sup>®</sup>

## One Solution to Enhance Productivity

We understand how important housekeeping and laundry professionals are to providing an exceptional guest experience.

In fact, they are the inspiration behind remarkable solutions like our OneSTEP<sup>®</sup> Program.

While each solution offers a unique set of benefits to hoteliers, when combined they offer housekeeping and laundry professionals the tools they need to make their jobs easier to accomplish.



## Sheeting Benefits

EZ ID® sheeting provides color-coding of the selvage yarns running down the side of the sheet, without having to compromise the luxurious appearance.

Center-Lock Labels identify the center of a sheet when making a bed.

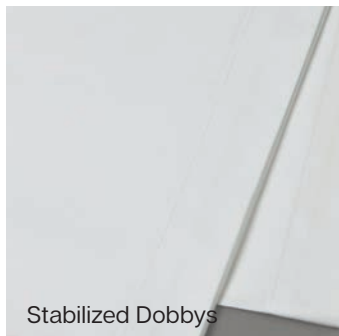
Balanced Hems allow either end of the sheet to be the top.

## Terry Benefits

EZ ID® terry color-coding system enables staff to easily identify towel weights by a distinct color bar on the sew-in label.

Dimensionally stabilized dobby borders eliminate the unsightly hour-glassing that normally affects terry products.

Square-cornered wash towels that last longer than traditional washcloths by eliminating the “whiskering”.





# Terry



Vidori® Terry



**Gradient<sup>®</sup>**



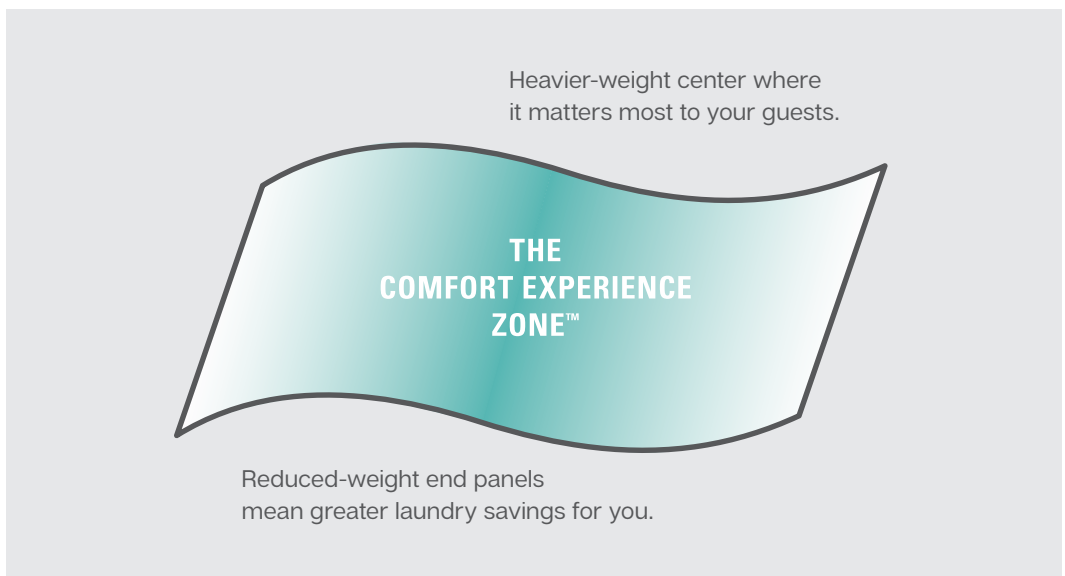
## What Matters Most: The Comfort Experience Zone™

The center of the towel is used much more often than the ends of the towel. By eliminating unneeded weight at the ends of the towel, we found we could reduce the overall weight of the towel without impacting its performance. That means hoteliers get a lower weight towel that costs less to process, and guests get the soft, comfortable, and absorbent drying experience they love and expect.

The innovative, proprietary weaving techniques the engineers at Standard Textile designed and developed allow us to focus the loft and absorbency in the center of the towel. We call this the Comfort Experience Zone™.

Currently, two of our towel collections, the new Gradient® and Elevations™ use this unique Parabolic or “bell curve” construction.

The weight redistribution in Gradient® terry is invisible to the eye, while the Elevations™ collection incorporates woven Jacquard and dobby designs accenting each end of the towel for a different design aesthetic.



# Elevations™

Exceptional experience™ at a lower product weight.

Elevations™ strategically reduces weight from the end of the towel and places more plush, absorbent pile where it matters most, in the center of the towel—what we call the Comfort Experience Zone™.

Heavier-weight center where  
it matters most to your guests.



Reduced-weight end panels  
mean greater laundry savings for you.





Capitol Collection™



Artesano Terry Rugs





Luxury Stripe®



Lynova®



Braque by Todd -Avery Lenahan



Pool & Spa Terry









# ForeverSoft™

Towels that stay exceptionally soft,  
wash after wash.

ForeverSoft™ towels combine several of our innovative technologies in order to provide the perfect balance of softness, strength, and enhanced performance.

An inherently fast-drying foundation saves processing and replacement costs.









# *Sheeting*



Centium Satin™ Microcheck



Vidori®

Vidori® elevates your guest's sleep experience while also extending service life, thanks to its patented design.


With Vidori®, guests experience exceptional softness and elegant beauty, and you experience durable, long-lasting quality. Breathable Vidori® sheets are light and delicate against the skin because they are woven with a soft ring-spun cotton blend.

Made with Centium Core Technology®, which promotes extended product life, Vidori® sheets are crease-resistant; outfitted with a center lock label and a size-identifying EZ ID® label to assist housekeeping staff; and pre-laundered with Tide®.









Dune by Todd -Avery Lenahan



# Paragon<sup>™</sup> Cotton

The most luxurious all-cotton sheet,  
made sustainably, to envelop your guests  
in cool cotton comfort.



Designer Closure Pillowcase

100% ring-spun combed cotton with a true sateen weave for a softer touch. Our proprietary moisture-wicking technology provides an incomparably comfortable sleep experience.

Paragon™ Cotton sheeting is made from environmentally friendly, responsibly sourced, 100% BCI certified cotton. Paragon™ Cotton sheets and pillowcases are compression treated to minimize shrinkage—as much as 50% less shrinkage than conventional 100% cotton products.



# Versatility<sup>®</sup>

A unique woven fabric that stretches to fit simply and securely on a variety of mattresses.

Unlike conventional woven fabrics that require the use of elastic bands or bindings, the inherent stretch-and-recovery characteristics woven into the Versatility<sup>®</sup> fabric allow these revolutionary contour sheets to be fabricated without elastic.



# ComforTwill® & Centima®

The comfort and style of cotton, combined with the durability of our patented Centium Core Technology®, provides unsurpassed strength and ultra-smooth feel.

The durable construction stands up to industrial laundering, eliminating the need for frequent replacement. Center-lock labels, balanced hems, and a crease-resistant finish increase housekeeping efficiency. Arrives Room Ready and can be used right out of the box.

ComforTwill® sheeting comes in solid, tone-on-tone stripe, or microcheck.



ComforTwill® Tone-on-Tone Stripe



# ***Mattress Protection***

EuroTech™ Mattress Pad with Versatility® End-Caps



# Comfort Cloud<sup>™</sup> & EuroTech<sup>™</sup>

Premium comfort. Uncompromised protection.





Soothing and strong, both EuroTech™ and Comfort Cloud™ offer the benefits of plush mattress toppers with a waterproof mattress pad. The most advanced liquid and stain protection combined with uniquely luxurious quilted fill create supreme performance.

Patented Versatility® retention caps, available exclusively from Standard Textile, ensure a snug fit on virtually every mattress and eliminate the need for anchor bands, elastic, and unsightly skirt fabrics.



AllerEase® Platinum Mattress Encasement

# ***AllerEase***® **Professional Collection**



## Protect your mattress investment.

Put your mind at ease with AllerEase® Professional. AllerEase is the #1 allergy bedding brand in the U.S., blocking pests and allergens from collecting in your mattresses and pillows. Discover AllerEase Professional for Standard Textile.

Superior mattress protection engineered exclusively for hoteliers, available in two options: The one-piece slip-on AllerEase Ultimate encasement or the AllerEase Professional Duraflex™ System encasement with your choice of easy to launder zip-off tops.



AllerEase® Ultimate Mattress Encasement





# *Pillows*







Chamberloft®



SoftSupport



AllerEase® Platinum





# *Robes*



Rachel by Heidi Weisel



Geometric Dual Tone



Waffle Weave



Honeycomb

Cotton Terry



# *Heidi Weisel* Robe Collection



The Designer Robe Collection for Standard Textile is the perfect blend of style, comfort, fit, and function.

A partnership between fashion designer Heidi Weisel and Standard Textile, this collection offers a new twist on how a guest robe should look, fit, and feel.

Heidi brought her design eye to reinventing the problem of the boxy, shapeless robe and created five distinct silhouettes.

Each robe has its own personality and special details.







Logan Waffle  
by Heidi Weisel



# *Blankets*



LuxSoft™

Herringbone Performance  
Blanket



Snowstorm®



Innerloft®







# *Top of Bed*

Designer Closure Duvet Cover in Centium Satin™ Tuxedo Stripe





# Cumulus<sup>®</sup>

Cumulus<sup>®</sup> top covers incorporate wash-activated texture and do not require industrial ironing.



A blend of polyester and cotton assures lasting performance and softness. Available in plain white and new Storm Cloud, a woven pattern featuring a distinctive grey ripple design.

Patented Centium Core Technology® dramatically extends the top cover's service life and enhances performance. A reduced overall product weight means decreased drying time and significant processing cost savings.



Concerto



# ***Todd -Avery*** ***Lenahan*** **Bed Ensembles**

Luxury that Endures™

A groundbreaking collection of striking jacquard ensembles for bedding that combine Standard Textile's patented Centium Core Technology® with Todd -Avery's uniquely elevated aesthetic.







# *Customization*

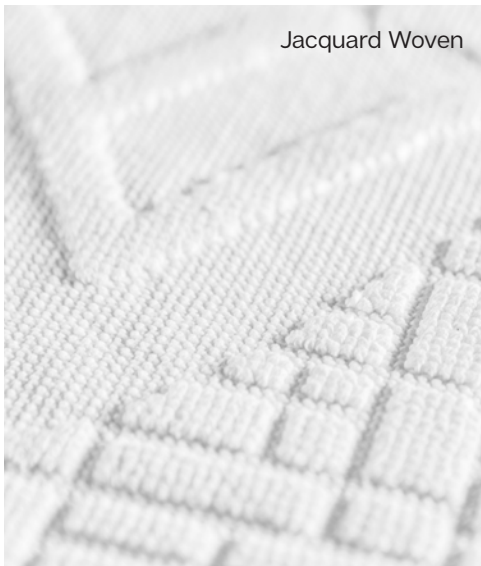


Embroidery



Embroidery

Jacquard Woven



Jacquard Woven



Embroidery

Customization is offered on Bedding, Terry, and Robes. Reinforce your brand or enhance decor.

Embroidery



Jacquard Woven



Jacquard Woven







We help you create beautiful environments. And we deliver complete customization to meet your needs. Fabrics, solar shades, upholstery, window treatments, top of bed, wallcoverings, shower curtains, and more.

Given the strength and longevity of our expertise, we offer what others can't, a trusted single source for new products, beautiful fabrics, specifying, manufacturing, installation, project management, and client support.



# *Interiors*







Circa® Bed Wrap's patented design allows you to create a clean, simple, and modern look for your bed in a matter of minutes.



## Circa® Bed Wrap

The sleek, one-piece design is constructed of sturdy and sustainable materials for a stylish, tailored fit around most box springs or bed frames. Rich, durable fabric provides the finishing touch.

Traditional bed skirts can be messy, chaotic, and difficult to install. The Circa® Bed Wrap is a simple, innovative solution that can be installed by one person with no heavy lifting required.

## Easily cover a box spring in minutes.

The circular design and four-way stretch knitted fabric makes the wrap easy to apply within minutes, and by just one person. Encircle® slides over the mattress with ease by covering the four sides of the box spring without lifting the mattress. Elastic around the bottom and top corners keeps the cover from popping off the box spring.

Encircle® accommodates various heights of box springs, ranging in heights from 5" up to 14", and allows for a 2" tolerance for length and width which ensures a smooth, snug fit on your box spring. Sizes include King, Hotel King, Queen, and Full. Available in two stock colors or can be custom printed.

Encircle® can be conveniently removed for laundering, making it a great solution for eliminating germs and dirt. To remove, simply take the cover off the box spring by pulling it up and over the mattress, and toss Encircle® right into the laundry.







**Encircle<sup>®</sup>**  
**Box Spring Cover**

# D2™ Convertible Flooring™

Going beyond conventional.

D2™ Convertible Flooring™ extends beyond the every day entry and walk-off zones to establish protective flooring throughout building interiors. D2's two-part design delivers the flexibility of conventional mats with the stability of installed flooring.

Prior to D2™, increased floor safety and stability was achieved only by adding weight to conventional mats, or through permanently installed flooring. This meant users had to compromise aesthetics or flexibility. D2™ placements do not move, shift or migrate, making them easy to deploy, clean, and maintain.

Maximizing both stability and design, the low-profile, lay-flat D2™ placement minimizes slip, trip, and fall risks. D2™ placements textile Tops are up to 50% lighter than conventional mats making them easier to install and clean.

Both D2™ Tops are available in three sizes: small, medium, and large. Both options can be custom printed with your supplied art or partner with our designers to source or create a custom design. Your design will never be discontinued, and there are no order minimums.







**ImagePoint<sup>®</sup>**



## Say anything.

Tell your story with ImagePoint® printed pillows, bedding, drapery, solar shades, and wallcovering.

Supply your own art or work with our talented design team.

Colors remain bright, wash after wash.





# *Made* Sustainably

Environmental issues are increasingly shaping the context of our business.

The cost, availability, utilization and management of energy and water, and the use of chemistry in manufacturing and processing of our products, all have implications for operations throughout the value chain—from the cotton farmer through the end user.

We've developed a culture of sustainability within our company, embedding sustainability principles in supply chain programs, product development, new technologies, and innovation.

We are committed to helping customers reduce their energy, chemical, and water consumption, through innovation.

## Customer Service

Our textile consultants are your point of contact, dedicated to serving you. They live and work in the markets that you serve, so they have a better insight into your ever-changing needs.

Customer service is our passion and exceeding your expectations is our goal. If a need should ever arise, you can trust our team will be standing by to respond.

## Technical Support

One of the benefits of partnering with Standard Textile is our team of technical experts who test product strength, shrinkage, durability, and absorbency before our products ever reach the marketplace.

Our on-site CORE facility enables us to duplicate processes and circumstances used by your facilities to better troubleshoot and solve your problems.

## Laundry Consulting

You won't find a more dedicated team of experts than our Technical Services Laundry Support division.

Working together, they'll analyze every aspect of your laundry needs and recommend process improvements that will significantly reduce your total linen costs.





**Service**  
***with you in mind***

1.800.323.5246  
STANDARDTEXTILE.COM