

# essential style™



Discovering and ordering a full room re-design is easier than ever with our Essential Style program. Bring a fresh new twist to your beds, drapes, and more. Mix and match from a variety of pattern and color combinations.

New, stylish rooms with no hassle.

**STANDARD**  
TEXTILE est. 1940

# top covers + duvets

You want top covers and duvets that are stylish and durable.  
Your guests want to be comfortable. Our top covers and duvets are both.





MT AUBURN/WHITE OAK DUVET COVER  
JEWEL/TOURMALINE BED SCARF | BERSERK/OCEAN THROW PILLOWS

## top covers + duvets

Available Top Cover Sizes: Full/Queen (98" x 100") King (116" x 100")

Available Duvet Sizes: Full/Queen (96" x 88") King (105" x 88")

Top Covers have 0.5" hem on all 4 sides

### OTTO



WHITE

Content: 100% Polyester  
Flammability: Passes NFPA 701  
Weight: 4.4 oz./yd.<sup>2</sup>

### EERO



WHITE

Content: 100% Polyester  
Flammability: Passes NFPA 701  
Weight: 4.04 oz./yd.<sup>2</sup>

### WEXLER



WHITE

Content: 100% Polyester  
Flammability: Passes NFPA 701  
Weight: 4.04 oz./yd.<sup>2</sup>

### OLMSTEAD



WHITE

Content: 100% Polyester  
Flammability: Passes NFPA 701  
Weight: 4.04 oz./yd.<sup>2</sup>

### FRANCISCO STRIPE



SNOW

Content: 100% Polyester  
Weight: 7.06 oz./yd.<sup>2</sup>

### MT AUBURN



WHITE OAK

Content: 100% Polyester  
Flammability: Passes NFPA 701  
Weight: 8.25 oz./yd.<sup>2</sup>

### SHADOWPLAY



SNOWBALL

Content: 100% Polyester  
Flammability: Passes NFPA 701  
Weight: 8.14 oz./yd.<sup>2</sup>

### SAVANNAH



WHITE

Content: 100% Polyester  
Weight: 6 oz./yd.<sup>2</sup>



WHIRL/WHITE | SAN REMO/WHITE

## top covers

Available Top Cover Sizes: Full/Queen (98" x 100") King (116" x 100")

### SAN REMO



WHITE

Content: 100% Polyester  
Weight: 7.46 oz./yd.<sup>2</sup>

### CANTERBURY



WHITE

Content: 100% Polyester  
Weight: 11.33 oz./yd.<sup>2</sup>

### LONGITUDE



WHITE

Content: 100% Polyester  
Weight: 7.9 oz./yd.<sup>2</sup>  
Longitude King is 114" x 110"  
due to its limited width

### CARTWHEEL



WHITE

Content: 100% Polyester  
Weight: 11.3 oz./yd.<sup>2</sup>

### ICEBREAKER



WHITE

Content: 100% Polyester  
Weight: 11.3 oz./yd.<sup>2</sup>

### WHIRL



WHITE

Content: 100% Polyester  
Weight: 11.3 oz./yd.<sup>2</sup>





# top of bed

LONGITUDE/WHITE TOP COVER | BERSERK/QUARRY BED SCARF  
FOUNDATION/QUARRY THROW PILLOW | OSLO/CARBON CIRCA BED WRAP

We have a variety of bedding solutions to highlight the centerpiece of your rooms.  
From bed scarves to pillows, we've got you—and *your bed*—covered.





BOUDINOT/CADET BED SCARF | MC DIAMOND/STEEL THROW PILLOW  
SAVANNAH/WHITE TOP COVER



BOUDINOT/SPICE RACK BOUDIOR PILLOW  
JEWEL/SMOKEY QUARTZ, BERSERK/GOLDENROD & FOUNDATION/QUARRY THROW PILLOWS



JEWEL/AMBER BED SCARF

## decorative scarves + pillows

Decorative scarves and pillows are the first step to making your beds look both stylish and inviting.

Bed Scarf Available Sizes:

Full (76" x 22")      Queen (84" x 22")      King (96" x 22")

Single layer, 1" hem on all 4 sides

Pillow Available Sizes:

Throw Pillow (18" x 18")      Boudior Pillow (25" x 15")

Knife edge, concealed zipper, includes insert



# decorative scarves + pillows—fabrics



BOUDINOT



SPICE RACK



CADET



FORESTRY



MULTI GRAIN



CONFETTI

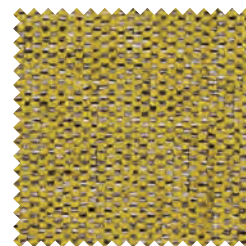
Content: 100% Polyester  
Flammability:  
Passes NFPA 260  
& CAL TB 117



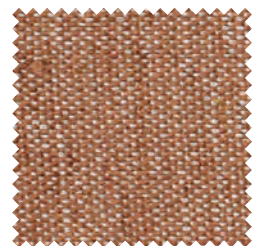
FOUNDATION



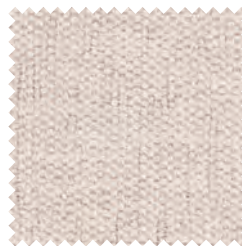
QUARRY



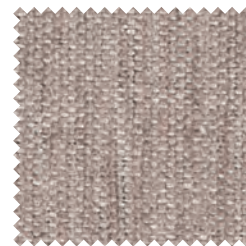
LILY PAD



COGNAC



WHITE SANDS



PUMICE

Content: 100% Polyester  
Flammability:  
Passes NFPA 260  
& CAL TB 117



JEWEL



TOURMALINE



AMBER



SMOKEY QUARTZ



GARNET



ESPRESSO

Content: 100% Polyester  
Flammability:  
Passes NFPA 701



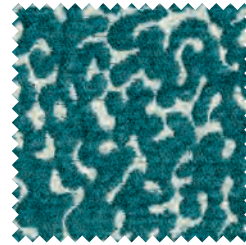
## decorative scarves + pillows—fabrics



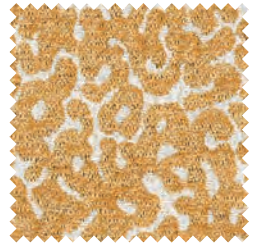
Content: 100% Polyester  
Flammability: Passes NFPA 260 & CAL TB 117



QUARRY



OCEAN



GOLDENROD



Content: 100% Polyester  
Flammability: Passes NFPA 260 & CAL TB 117



PAPRIKA



STEEL



ROSEMARY



GODIVA



COOKIE



TOAST



## CIRCA® BED WRAP

HUDSON/COCOA



## BED SKIRT

JEWEL/ESPRESSO



## BOX SPRING COVER

ZIRCON/SMOKEY



base of bed

The attention to detail that a well-fitting bed skirt or box spring cover provides is the secret to a stunning room.





ZIRCON/UNIFORM BOX SPRING COVER

## bed skirts + box spring covers

Let's face it, box springs aren't that visually appealing, so here are some options to spruce up everything below the mattress.

These items are made-to-order, specifically for your bed. Please see the measurement form on page 18.

Bed Skirts: have 2 inverted kick pleats at bottom corners  
4" header for a snugger fit, 3" platform strips  
Polyester/Cotton decking

Box Spring Covers:  
Have elastic in all 4 corners for a snug fit  
3" platform strips, Polyester/Cotton decking



bed skirt + box spring covers—fabrics



PORPOISE



SMOKEY QUARTZ



MAGNESIUM



UNIFORM



SAND

Content: 100% Polyester  
Flammability: Passes  
NFPA 701 & CAL Title 19



TOURMALINE



AMBER



SMOKEY QUARTZ



GARNET



ESPRESSO

Content: 100% Polyester  
Flammability:  
Passes NFPA 701



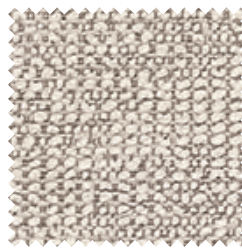


JUNO/PUMICE CIRCA BED WRAP

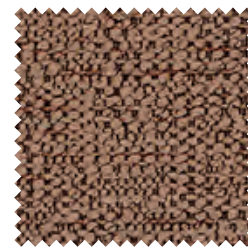
## circa® bed wrap

Get the look of a platform bed without the price tag of a platform bed. Not only do you get a modern, stylish look, Circa® Bed Wrap can be easily installed by one person.

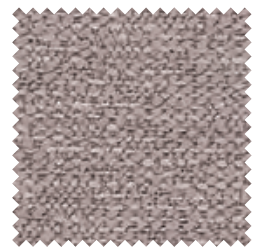
This box spring & bed frame wrap is made-to-order, specifically for your bed.  
Please see the measurement form on page 19.



PUMICE



FAWN



QUARRY

Content: 100% Polyester  
Stain Resistant Finish Added  
Flammability: Passes CAL 117 & NFPA 260



# circa® bed wrap—fabrics



COCOA



PARCHMENT



CUMIN



WHISTLER

Content: 100% Polyester  
Stain Resistant  
Flammability: Passes CAL 117 & NFPA 260



TOADSTOOL



KIWI



OCEAN



CARBON

Content: 100% Polyester  
Stain Resistant  
Flammability: Passes CAL 117 & NFPA 260



TOURMALINE



AMBER



SMOKEY QUARTZ




GARNET



ESPRESSO

Content: 100% Polyester  
Stain Resistant Finish  
Added  
Flammability:  
Passes NFPA 701





FLEXBOX/WHITE SHEERS  
CARLYLE/GRAPHITE BLACKOUT DRAPERY

# drapery fabrics

We've got sheer fabrics that let a little natural light in, and blackout fabrics that block out the sun. No matter what your drapery needs are, you can get custom-made drapes to perfectly fit your windows.



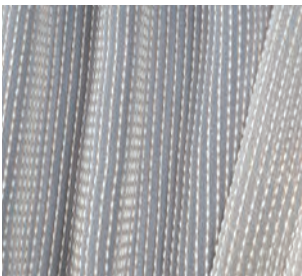


DASHING/COCOON

## sheer drapery fabrics

These fabrics are perfect for when you still want a little natural light to come through and illuminate your room.

### DASHING



COCOON



CONCRETE

Content: 100% Polyester  
Width: 118" (shown Railroaded)  
Flammability: Passes NFPA 701, CAL Title 19 & CAN ULC S-109

### BALTHAZAR



PUMICE



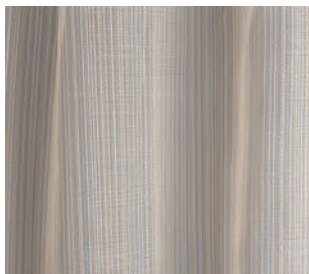
RAISIN

Content: 100% Polyester  
Width: 118" (shown Railroaded)  
Flammability: Passes NFPA 701, CAL Title 19 & CAN ULC S-109

### FLEXBOX



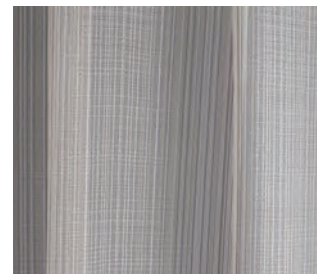
WHITE



CHICKPEA



WILD RICE



LIMESTONE

Content: 100% Polyester  
Width: 118" (shown Railroaded)  
Flammability: Passes NFPA 701, CAL Title 19 & CAN ULC S-109



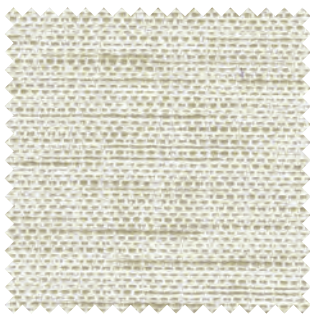


CARLYLE/GRAPHITE

## blackout drapery fabrics

And sometimes your guests don't want any light to sneak in and interrupt their experience. That's when you want Blackout Fabrics.

### NOLITA



GRASSCLOTH



MACADAMIA



JUTE

Content: 66% Polyester/34% Cotton  
Width: 54"  
3 Pass Blackout  
Flammability: Passes NFPA 701

### CARLYLE



TITANIUM



GRAPHITE



FAWN



MICA

Content: 100% Polyester  
Width: 54"  
3 Pass Blackout  
Flammability: Passes NFPA 701



# washing instructions

Standard Textile Co., Inc. Processing Procedure Polyester Decorative Bedding Fabrics

## processing requirements

Polyester Decorative Fabrics should be laundered separate from other linen to minimize lint accumulation from other products and to maximize the economics of the synthetic fabric.

*Formula:* This formula is only a guideline. Alterations should be made at the discretion of the laundry professional based on specific requirements, supplies, equipment and experience.

STEP	OPERATION	TIME	WATER LEVEL	TEMPERATURE	SUPPLIES PER 100 LB. LOAD
1	Flush	3 min.	High	100° F	--
2	Break/Suds	8 min.	Low	140° F	6 oz. nonionic detergent & 6 oz. alkali
3	Rinse	2 min.	High	140° F	--
4	Rinse	2 min.	High	130° F	--
5	Rinse	2 min.	High	115° F	--
6	Sour	4 min.	Low	100° F	Sour to pH of 5.5-6.5

Do not overload the washer. Fabric should float freely. Use nonionic (synthetic) detergent.

Do not use bleach on colored items (bleach is acceptable for white items).

SPIN EXTRACT ONLY – Fabric requires no more than 2 to 4 minutes of spin extracting, depending on the size of the load. REMOVE IMMEDIATELY.

DRYING CYCLE – Do not overload dryer. Fabric should float freely. Tumble dry for 3 to 5 minutes on synthetic cycle; no more than 140° F. As with all polyester, excessive heat will detract from the permanent-press characteristics of the fabric.

DO NOT PROCESS WITH FLATWORK IRONER!

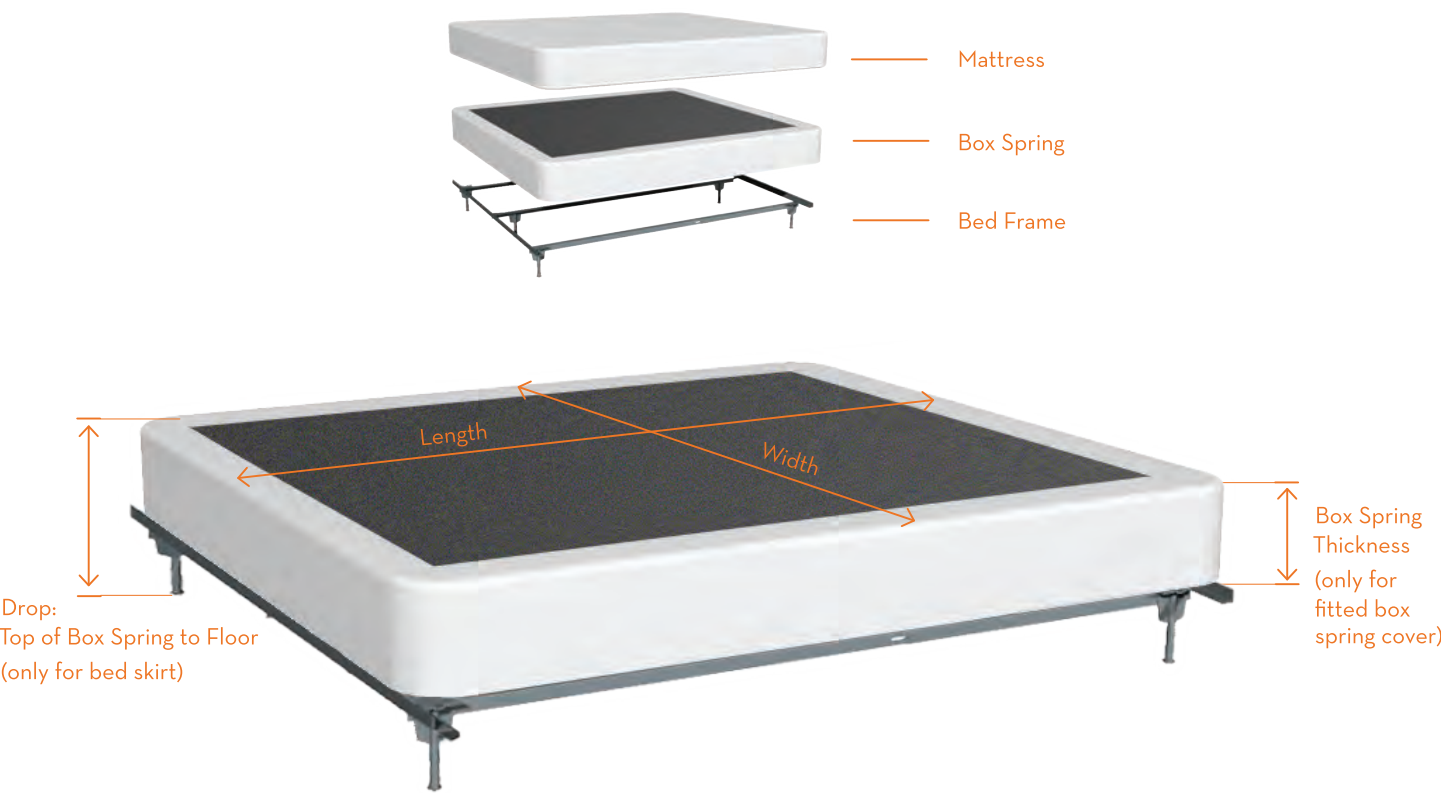
DO NOT HAND IRON!

FOLD/LAYOUT IMMEDIATELY!

\*PLEASE NOTE: These instructions are for bedding only. Window treatment fabrics are not launderable.



# bedskirt + box spring measurement form



Ordering: ☐ Bedskirts    ☐ Fitted Box Spring Covers

KING	QUEEN	FULL
Quantity _____	Quantity _____	Quantity _____
Width _____	Width _____	Width _____
Length _____	Length _____	Length _____
Top of Box Spring to Floor (Drop) _____	Top of Box Spring to Floor (Drop) _____	Top of Box Spring to Floor (Drop) _____

Complete below only if ordering fitted box spring covers.

Box Spring Thickness \_\_\_\_\_
 Box Spring Thickness \_\_\_\_\_
 Box Spring Thickness \_\_\_\_\_

Plastic Caps on all Four Corners of the Box Spring: ☐ Yes    ☐ No
 Frame Type: ☐ Metal Frame    ☐ Platform



# circa® bed wrap measurement form



## SIMPLE SET UP

1. Unroll and wrap around sides and foot of bed.
2. Buckle straps at the head of bed.
3. Fold corner fabric to achieve a finished look.
4. Buckle straps at the foot of bed.

Bed Size:	<input type="checkbox"/> Hotel King (72 x 80)	Drop: _____	Quantity: _____
	<input type="checkbox"/> California King (72 x 84)	Drop: _____	Quantity: _____
	<input type="checkbox"/> King (76 x 80)	Drop: _____	Quantity: _____
	<input type="checkbox"/> Queen (60 x 80)	Drop: _____	Quantity: _____
	<input type="checkbox"/> Full (54 x 80)	Drop: _____	Quantity: _____
	<input type="checkbox"/> Twin (38 x 75)	Drop: _____	Quantity: _____

\*Drop Measurement = top of the box spring to the floor minus 1"



— BOX SPRING  
— BED FRAME



Headboard is attached to bed frame:	<input type="checkbox"/> Yes	<input type="checkbox"/> No
Project will be done in phases:	<input type="checkbox"/> Yes	If so, how many phases: _____
Include Freight Quote:	<input type="checkbox"/> Yes	<input type="checkbox"/> No

Upholstery Fabric: Available Railroaded Only

☐ Standard Textile Exclusive Upholstery

Data Number: \_\_\_\_\_

Pattern: \_\_\_\_\_

Colorway: \_\_\_\_\_

Comments: \_\_\_\_\_

\_\_\_\_\_

\_\_\_\_\_

\_\_\_\_\_





FEATURED ON COVER:

ICEBREAKER TOP COVER  
BOUDINOT/CONFETTI BOUDIOR PILLOWS  
FOUNDATION/LILY PAD BED SCARF  
ZIRCON/MAGNESIUM BED SKIRT

800.999.0400  
[standardtextile.com/interiors](http://standardtextile.com/interiors)

©2018. Standard Textile Co., Inc. All rights reserved.

**STANDARD**  
TEXTILE est. 1940