



# THE NEXT GENERATION OF HEALTHCARE TEXTILES

- Prevent pressure injuries.
- Reduce pain and suffering.
- Improve outcomes.
- Reduce costs.

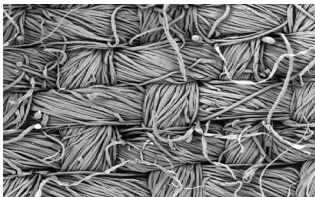


## Smoother

DermaTherapy® fabrics are engineered to reduce shear and friction on the patient’s skin by eliminating the protruding short fibers found in cotton bedding.



DERMATHERAPY® MAGNIFIED

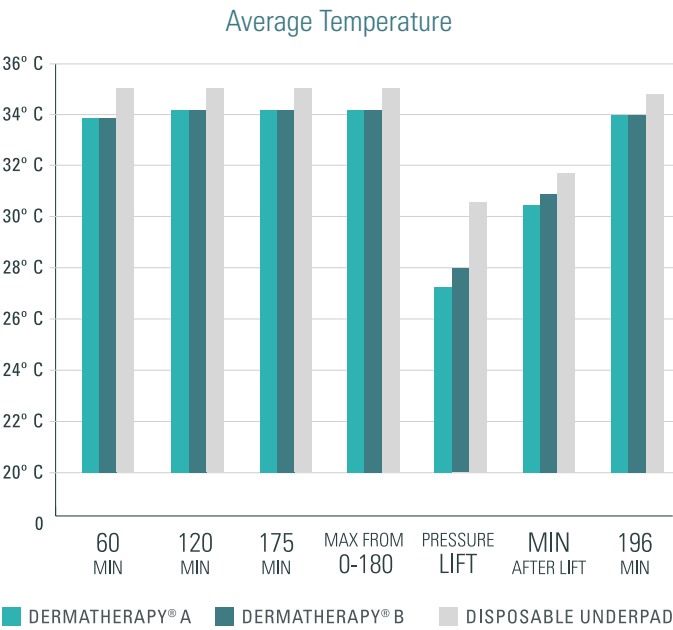


COTTON FIBERS MAGNIFIED

## Cooler

Tests conducted at an independent lab indicate that the DermaTherapy® underpad stays cooler and releases heat better than disposable underpads.

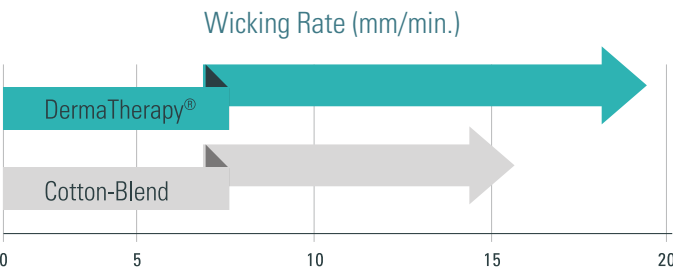
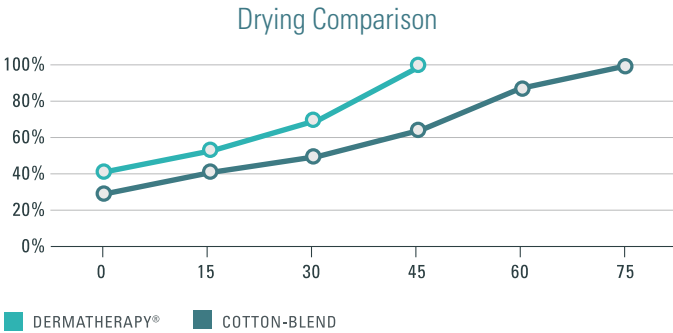
A 1° Celsius reduction in skin temperature results in a 10-15% drop in metabolic demand. When cutaneous heat build-up occurs with external loading, tissue loading impedes the delivery of blood and nutrients at a time when the need for both is heightened.



DermaTherapy® is a registered trademark of Precision Fabrics Group, Inc.

## Drier

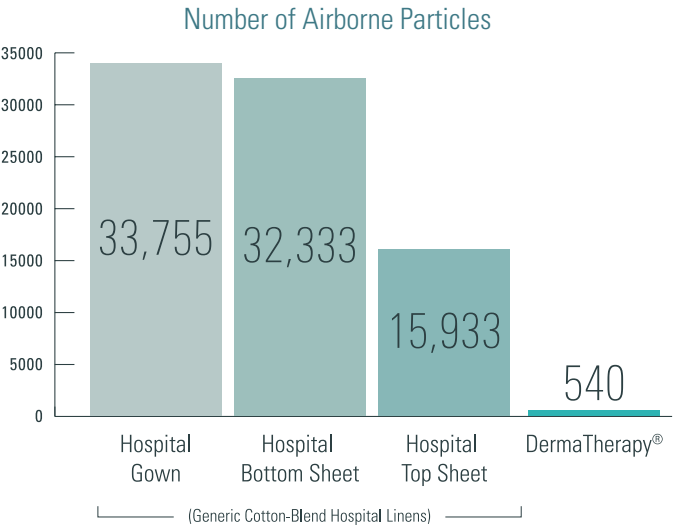
The continuous filament yarns contain micro-channels that wick moisture away from the skin 47% faster. DermaTherapy®’s uniquely engineered fibers have micro-channels that wick and dry moisture faster than cotton.



## Cleaner

A durable antimicrobial treatment helps maintain freshness and eliminates odors on the fabric caused by germs and bacteria. The soil release finish aids with the release of stains.

DermaTherapy® fabrics do not generate airborne particles such as lint, and significantly reduce bioburden on bedding and gowns.





Protect your patients with the industry’s first and only FDA cleared silk-like linen proven to prevent pressure injuries.

### How DermaTherapy® Works

DermaTherapy® therapeutic linen products are the next generation of healthcare bedding and gowns, designed to improve patient care and satisfaction while lowering overall healthcare costs. DermaTherapy® has been tested in numerous clinical trials, **involving over 30,000 patients at risk for pressure ulcers.**

The following is a summary of the tremendous results achieved during these trials:

- Reductions in the incidence of HAPU development averaged **66%** when using DermaTherapy® as compared with conventional bedding.
- Reductions in the incidence of total pressure ulcers for patients at discharge averaged **20%** when using DermaTherapy® as compared with conventional bedding.
- Reductions in the patients’ length of stay averaged **0.24** days.

### Maximum Patient Protection Starts Now

While DermaTherapy® is a complete suite of linen products—Fitted Sheet, Flat Sheet, Pillowcase, Underpad, and Patient Gown—the two products that have the highest impact on preventing pressure injuries and improving patient care are the Fitted Sheet and the Underpad. Together, these two items provide the following benefits:

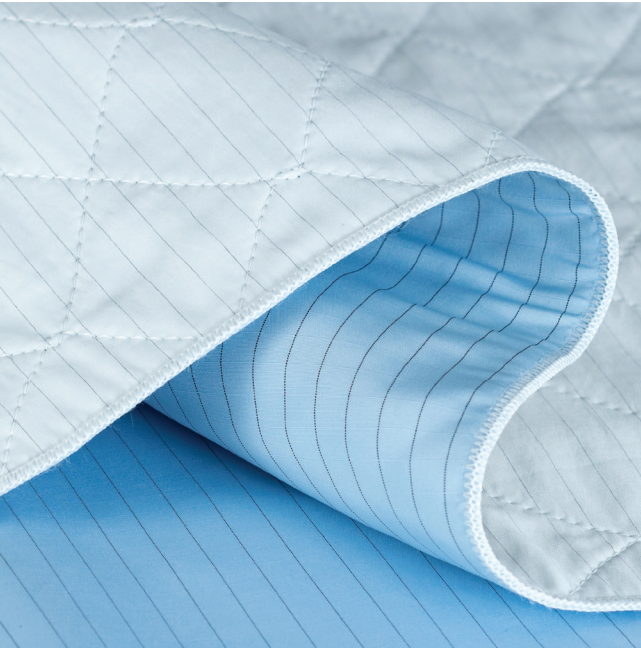
- Reduces incidence of pressure injuries and associated costs.
- Amplifies the clinical performance and outcomes achieved with specialty mattresses.
- Improves treatment for existing skin issues by optimizing the microclimate surrounding the patient.
- Reduces bioburden, a potential source of infection, with a built-in antimicrobial and virtually lint-free fabric
- Minimizes friction between the fitted sheet and underpad, providing easier patient positioning and less back strain on clinicians.
- DermaTherapy® products are very versatile and can be used on any healthcare bed.
- Provides moisture management and incontinence care, significantly reducing or eliminating the cost of disposable underpads and associated medical waste.

### Underpads

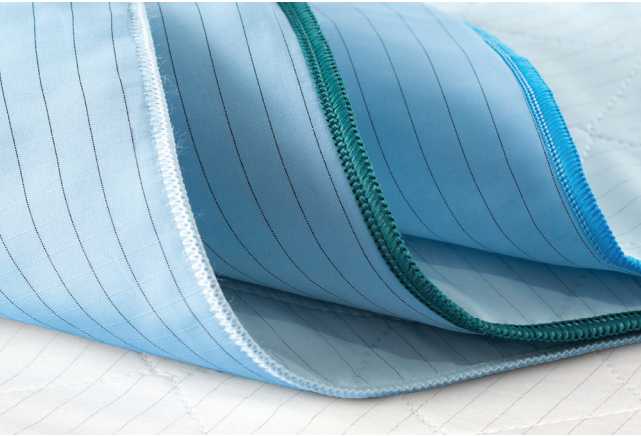
The patient-facing surface of DermaTherapy® underpads is the same material used in DermaTherapy® silk-like bedding.

Since the underpad is in direct contact with the patient, the same microclimate control of moisture, heat, friction and shear is present to minimize skin breakdown.

Available in standard and bariatric sizes, DermaTherapy® underpads’ smooth surface also improves ease of patient movement and repositioning.



DERMATHERAPY® UNDERPAD



DERMATHERAPY® UNDERPAD, 3 SIZES



DERMATHERAPY® FITTED SHEET

### Fitted Sheet

DermaTherapy® therapeutic linens optimize the patient’s microclimate by reducing friction and shear, and managing moisture and heat between the patient’s skin and the support surface. The patented fabric contains continuous filament yarns that are free of short, protruding fibers or pills that can create friction and cause skin irritation. The result is a silk-like sleep surface that skin slides smoothly across, minimizing abrasion and preventing shear.

DermaTherapy® fabric is woven of fibers with unique cross-sections that create thin micro-channels to wick moisture away 47% faster and dry 67% quicker than traditional linen. The micro-channels also release heat, keeping the patient cooler, healthier and more comfortable.

The DermaTherapy® fitted sheet incorporates a durable antimicrobial that inhibits the survival of bacteria on the bedding, and it virtually eliminates airborne particles such as lint. The built-in antimicrobial and elimination of lint significantly reduces the bioburden, a potential cause of facility-acquired infections.