



**STANDARD**  
TEXTILE est. 1940

Excellence in Defending Our Country  
Excellence in Comforting Our Heroes



**Standard Textile is committed to serving our Nation's Veterans, Military Personnel, and Federal Employees.** Please browse this catalog for an assortment of our featured product lines.

To contact a local representative, email [csgovernment@standardtextile.com](mailto:csgovernment@standardtextile.com).

Contact Lyddane Knewitz, National Director of Government Operations,  
at [Lknewitz@standardtextile.com](mailto:Lknewitz@standardtextile.com) or 817.800.9044.

Federal Contract Numbers

**DAPA: SP0200-98-H-0080**

**FSS: 36F79722D0110**



# Table of Contents

About Us Page 5

Bedding & Bath Page 10

Incontinence Products Page 16

Staff & Patient Apparel Page 20

Surgical Products Page 28

Interiors Page 35

This catalog only represents  
a partial list of product offerings.

For a more comprehensive list of our products,  
please visit **[www.standardtextile.com](http://www.standardtextile.com)**.





# About Us

## An American Journey

Standard Textile was founded in 1940 by Charles Heiman, an immigrant from Germany, who had been incarcerated in the Dachau concentration camp. Charles came to America to build a new life for his family. What started as a small textile distribution company operating from the family's apartment in Cincinnati, Ohio has grown into a global leader in healthcare and hospitality textiles, apparel, and window treatments. Standard Textile is proud to be an American-based company with manufacturing and distribution centers located throughout the United States.

For over eighty years, Standard Textile has developed a culture of innovation, quality, and service, earning more than 80 patents for products engineered to deliver durability, longevity, and value. We're committed to helping customers succeed.

Leveraging textile design, manufacturing, and laundry expertise, and our vertically integrated global infrastructure, we serve customers in the healthcare, hospitality, interiors, and consumer markets worldwide.

We are proud to service the United States Government with a full line of cost-effective quality products.





# Innovation

Standard Textile is uniquely positioned to meet the textile, apparel, and interior needs of the U.S. Government. Our decades of experience give us an in-depth understanding of the challenges our customers face—and a keen appreciation of the ever-evolving nature of their business. **That's why we're aggressive about adding innovative new products and technologies that deliver unsurpassed durability, longevity, comfort, and value.**

Product development, testing, and prototyping are conducted in our one-of-a-kind, world-class textile development and processing center, which we call “CORE.” Innovation is core to our success, so we've invested in creating a mini-manufacturing facility, industrial laundry, testing laboratory, and finishing workroom at our corporate headquarters in Cincinnati, Ohio.

Regularly, customers visit the CORE to learn about our innovation process. Our Global Institute for Innovation & Leadership, also located on the campus of our corporate headquarters, is a dedicated space for customers and partners to discuss and solve real business challenges. We invite you to visit us. Together, we'll discover new ways to improve experiences.

# Global Supply Chain

Standard Textile is the only vertically integrated textile company serving the healthcare and hospitality markets. **Full control over the entire supply chain enables us to ensure superior value, consistent quality, and on-time delivery.**

Supply chain control also provides us an opportunity to innovate at every stage of the life cycle—from engineering fiber through finished product to laundry solutions.

With 24 manufacturing and distribution facilities in 12 countries, including facilities in North America, Europe, the Middle East, and the Far East, we're committed to delivering innovative solutions that offer the greatest value to our customers.





# Sustainability

Environmental issues are increasingly shaping the context of how we live and how we operate our businesses. The cost, availability, utilization, and management of energy and water, as well as the chemistry used in manufacturing and processing our products, have environmental implications.

We've developed a culture of sustainability within our company. **We're continuously developing new ways to help our company and our customers reduce environmental impact.** From sustainable supply chain programs to eco-friendly product solutions, we continue to pursue innovation as the key to addressing the environmental challenges facing our industry and our planet.

## **SUPPLY CHAIN PROGRAMS & INNOVATION**

### **Water Consumption & Treatment Energy Utilization**

Our proprietary terry manufacturing process reduces water usage. On average, 70% of water used in our finishing plants is re-used. 14,400,000 gallons of water annually are recycled and re-used within the desize and bleaching processes. Our patented finishing process diminishes plant natural gas demand by 14,412 MMBTUs per year.

### **Input & Byproduct Recycling**

Waste fiber and fabric is recycled. Yarn cones are returned and reused. Pallets used for shipment of yarn cones are returned and reused.

### **Packaging Minimization & Recycling**

Over 40% of our shipping corrugate is comprised of recycled fiber. Packaging design minimizes corrugate used. Efficiently engineered pallets are returned and reused for subsequent shipments.

# Bedding & Bath







Standard Textile's bed and bath linens are designed and manufactured for comfort and performance.

# Bedding & Bath

SPREAD BLANKETS



### Thermal Blanket

100% Cotton; Checkerboard Pattern; Selvage Sides, Hemmed Ends

COLOR	ORDER #	SIZE	WEIGHT (LB/EA)
Bleached	784665G0	66x90	2.5



### Bath Blankets

Selvage Sides, Hemmed Ends

COLOR	ORDER #	CONSTRUCTION	SIZE	WEIGHT (LB/EA)
Unbleached	80102GG1	86% Cotton/14% Polyester	70x90	1.4
Unbleached	801511G1	100% Cotton	72x90	2.2
Unbleached	801521G1	87% Cotton/13% Polyester	72x90	1.75



## PILLOWS



### Pillows

ORDER #	CONSTRUCTION	SIZE	WEIGHT/EA	COLOR
930401G3	Vinyl Ticking, 17 oz. Polyester Fill	21x26	17 oz	Peach (Pictured)
932371G0	Nylon Ticking, 18 oz. Polyester Fill	20x27	18 oz	Cream
932601G0	Polypropylene Ticking, 18 oz. Polyester Fill	21x26	18 oz	White

## SHEETING



### DermaTherapy® Sheeting - FDA Clearance

Therapeutic linens clinically proven to reduce the likelihood of patients developing pressure ulcers by reducing moisture, friction, and shear on patient's skin.

DESCRIPTION	ORDER #	FINISHING	SIZE	COLOR
Pillowcase	17810000	4.5" Flap	18x29.5	White/Black Carbon Stripes
Fitted	17810100	Elastic Binding All Around	37x79x10	White
Flat	17810200	Hemmed on Four Sides	66x99	White/Black Carbon Stripes
Fitted	17810300	ICU, Elastic Binding All Around, Sewn With Yellow Thread	36x78x16	White/Black Carbon Stripes
Bariatric Fitted	17810400	Elastic Binding All Around, Sewn With Purple Thread	48x80x11	White/Black Carbon Stripes

### Promote healing.

DermaTherapy® therapeutic linen products are the first and only healthcare bedding that have received FDA 510(k) clearance as a Class I Medical Device for use in the prevention of pressure injuries. By optimizing the microclimate surrounding the resident's skin, minimizing friction and shear, and managing moisture and heat, the technology in DermaTherapy® products is clinically proven to reduce the occurrence of pressure injuries, improve patient satisfaction, and lower the cost of care.

# Bedding & Bath

SHEETING



### T-180 Sheeting

55% Cotton/45% Polyester

DESCRIPTION	ORDER #	SIZE	COLOR
Flat	033504GC	66x108	Bleached
Flat	033405G0	66x115	Bleached
Fitted	036354G0	36x84x8	Bleached
Pillowcase	037174GC	42x34	Bleached
Pillowcase	037175G0	42x34	Bleached
Drawsheet	039364GC	54x81	Bleached
Drawsheet	03941GG1	54x72	Bleached



### Knit Stretcher

52% Cotton/48% Polyester; Vat-Dyed; Sewn With Red Thread

DESCRIPTION	ORDER #	SIZE	COLOR
Jersey	072504G2	26x76x7.75	Misty



### Knitted Fitted Sheets

52% Cotton/48% Polyester

DESCRIPTION	ORDER #	SIZE	COLOR
Jersey	072454G0	36x82x14.25	Bleached
Jersey	072454G5	36x82x13	Bleached

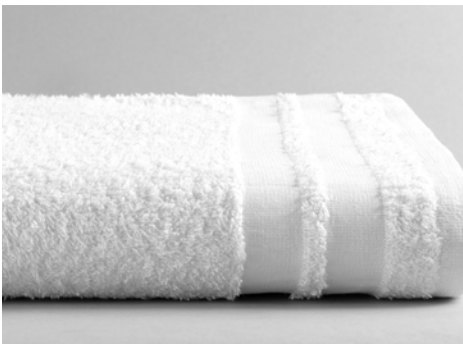
## TOWELS



### 5-Cam Border Terry

86% Cotton/14% Polyester; 5-Cam Design

DESCRIPTION	ORDER #	SIZE	WEIGHT (LB/EA)	COLOR
Hand Towel	401441G0	16x27	3/dz	Bleached



### Double Cam Border Terry

85% Cotton/15% Polyester

DESCRIPTION	ORDER #	SIZE	WEIGHT (LB/EA)	COLOR
Bath Towel	404614G0	22x44	6/dz	Bleached



### Cam Border Terry

100% Cotton; Washcloth is Hemmed on Four Sides

DESCRIPTION	ORDER #	SIZE	WEIGHT (LB/EA)	COLOR
Bath Towel	401614G0	24x48	8/dz	Bleached
Bath Towel	405254G0	20x40	5.5/dz	Bleached
Washcloth	433774G0	12x12	1/dz	Bleached



### Washcloths

100% Cotton

FINISHING	ORDER #	SIZE	WEIGHT (LB/EA)	COLOR
Serged, rounded corners	436234G0	12x12	0.75/dz	Bleached
Plain terry, no border	437044G1	12x12	0.50/dz	Bleached



# Incontinence Products







We manufacture and supply the highest quality underpads available to the healthcare market.

# Incontinence Products

UNDERPADS



Underpads

DESCRIPTION	ORDER #	SIZE	COLOR
Underpad	61064111	17x24	White
Underpad	59782100	33x36	White
Underpad	59782000	33x36	White
Underpad	59748100	33x36	White

UNDERPADS



**DermaTherapy®**

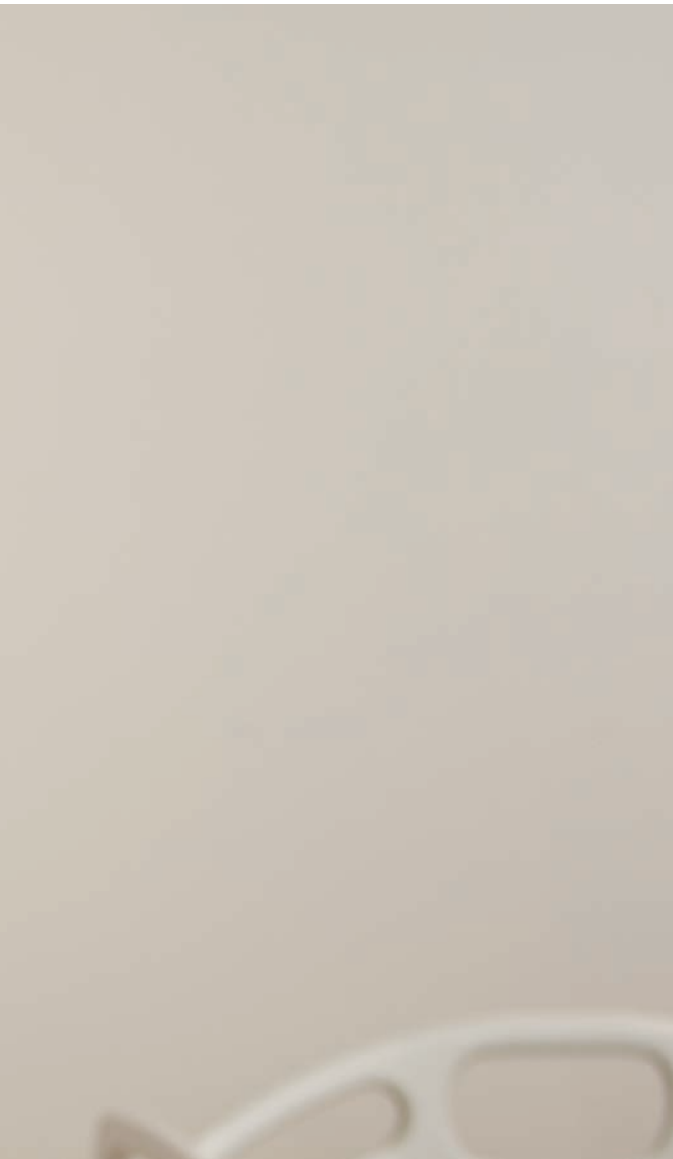
The technology in the patented and FDA-cleared DermaTherapy® underpad top surface is clinically proven to prevent the occurrence of pressure injuries. The ripstop polyester barrier backing of the DermaTherapy® underpad is smooth, liquid resistant, and air-permeable, making the DermaTherapy® underpad a superior choice for use with specialty beds as both an incontinence care product and a patient positioner.

DESCRIPTION	ORDER #	SIZE	COLOR
Underpad	59750800	34x36	White/Black Carbon Stripes



# Staff & Patient Apparel





Get superior comfort at a cost-effective price with our selection of staff apparel and scrubs.

# Staff & Patient Apparel

## STAFF APPAREL



### T180 Scrub Shirts

55% Cotton/45% Polyester; Unisex; Vat-Dyed;  
Reversible; V-Neck; Set-In Sleeves

Colors: J C M

ORDER #	SIZE	COLOR
6653R050	5XL	Jade
6653R051	4XL	Jade
6653R052	3XL	Jade
6653R053	2XL	Jade
6653R054	XL	Jade
6653R055	Large	Jade
6653R056	Medium	Jade
6653R057	Small	Jade
6653R058	X-Small	Jade
6654R050	5XL	Ceil
6654R051	4XL	Ceil
6654R052	3XL	Ceil
6654R053	2XL	Ceil
6654R054	XL	Ceil
6654R055	Large	Ceil
6654R056	Medium	Ceil
6654R057	Small	Ceil
6654R058	X-Small	Ceil
6652R050	5XL	Misty
6652R051	4XL	Misty
6652R052	3XL	Misty
6652R053	2XL	Misty
6652R054	XL	Misty
6652R055	Large	Misty
6652R056	Medium	Misty
6652R057	Small	Misty
6652R058	X-Small	Misty



### T180 Scrub Pants

55% Cotton/45% Polyester; Unisex; Vat-Dyed;  
Reversible; Drawstring Waist

Colors: J C M

ORDER #	SIZE	COLOR
6653R040	5XL	Jade
6653R041	4XL	Jade
6653R042	3XL	Jade
6653R043	2XL	Jade
6653R044	XL	Jade
6653R045	Large	Jade
6653R046	Medium	Jade
6653R047	Small	Jade
6653R048	X-Small	Jade
6654R040	5XL	Ceil
6654R041	4XL	Ceil
6654R042	3XL	Ceil
6654R043	2XL	Ceil
6654R044	XL	Ceil
6654R045	Large	Ceil
6654R046	Medium	Ceil
6654R047	Small	Ceil
6654R048	X-Small	Ceil
6652R040	5XL	Misty
6652R041	4XL	Misty
6652R042	3XL	Misty
6652R043	2XL	Misty
6652R044	XL	Misty
6652R045	Large	Misty
6652R046	Medium	Misty
6652R047	Small	Misty
6652R048	X-Small	Misty



# Staff & Patient Apparel

## STAFF APPAREL



### T180 Warm-Up Jackets

55% Cotton/45% Polyester; Unisex; Vat-Dyed;  
5 Metal Snaps; 2 Lower Pockets

Colors: J C M

ORDER #	SIZE	COLOR
665326G0	5XL	Jade
665326G1	4XL	Jade
665326G2	3XL	Jade
665326G3	2XL	Jade
665326G4	XL	Jade
665326G5	Large	Jade
665326G6	Medium	Jade
665326G7	Small	Jade
665326G8	X-Small	Jade
665426G0	5XL	Ceil
665426G1	4XL	Ceil
665426G2	3XL	Ceil
665426G3	2XL	Ceil
665426G4	XL	Ceil
665426G5	Large	Ceil
665426G6	Medium	Ceil
665426G7	Small	Ceil
665426G8	X-Small	Ceil
665226F0	5XL	Misty
665226F1	4XL	Misty
665226F2	3XL	Misty
665226F3	2XL	Misty
665226F4	Medium	Misty
665226F5	Small	Misty
665226F6	Medium	Misty
665226F7	Small	Misty
665226F8	X-Small	Misty

## LAB COATS



### ComPel® Lab Coats

Fluid Resistant; Lapel Collar; Access Slits; Chest Pocket; 2 Lower Pockets; Cuff Shields; Comfort Panel Back w/Negastat; Plain Back

ORDER #	SIZE	COLOR
66102312	3XL	White
66102313	2XL	White
66102314	XL	White
66102315	Large	White
66102316	Medium	White
66102317	Small	White
66102318	X-Small	White



### Poplin Lab Coats

65% Polyester/35% Cotton; Unisex; Lapel Collar; Side Access Slits; Plain Back; 4 Button Closure; 40" Length

ORDER #	SIZE	COLOR
66800522	3XL	White
66800523	2XL	White
66800524	XL	White
66800525	Large	White
66800526	Medium	White
66800527	Small	White
66800528	X-Small	White

## ISOLATION GOWNS



### Isolation Gowns

100% Polyester; Liquid Resistant; Stockinette Cuffs

ORDER #	SIZE	COLOR
666405G2	3XL	Yellow
661YUAG4	XL	Yellow
661YUAG5	Large	Yellow

# Staff & Patient Apparel

## PATIENT APPAREL

### Lapover Gowns

55% Cotton/45% Polyester

COLOR	ORDER #	SIZE	DIMENSIONS	FINISHING
Standard Classic Blue	7496A4G0	Large	68/51/4	Tape Tie Neck & Waist, Scoop Neck, Century Cloth
Standard Classic Green	7498A4G0	Large	68/51/4	Tape Tie Neck & Waist, Scoop Neck, Century Cloth
Kaleidoscope Grey	74GG24G0	Large	68/51/5	Tape Tie Neck & Waist, V-Neck
Kaleidoscope Blue	74GG44G1	Large	68/51/5	I.V. Sleeves, Telemetry Pocket, V-Neck
Tiffany Mauve	70G200G4	10XL	102/48/5	Tape Tie Neck & Waist
Tiffany Blue	70G205G0	XL	66/48/5	Tape Tie Neck & Waist
Tiffany Blue	70G207G0	3XL	74/48/5	Tape Tie Neck & Waist
Tiffany Blue	70G250G0	10XL	102/48/5	I.V. Sleeves
Tiffany Mauve	70G255G4	XL	66/48/5	I.V. Sleeves
Tiffany Mauve	70G257G4	3XL	74/48/5	I.V. Sleeves



Standard Classic Blue



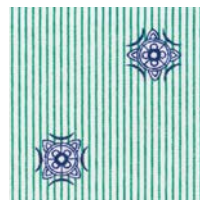
Standard Classic Green



Tiffany Mauve (Bariatric)



Standard Classic Blue



Standard Classic Green



Kaleidoscope Grey



Kaleidoscope Blue



Kaleidoscope Blue



Tiffany Blue



Tiffany Mauve





# Surgical Products





Our innovative surgical and protective products combine the highest level of protection with extraordinary comfort. Sophisticated manufacturing and finishing processes ensure high performance and deliver innovative design.

# Surgical Products

## SURGICAL GOWNS



### ComPel® Surgical Gowns

Fluid Resistant; Tape Ties at Neck and Waist;  
2-Ply Front & Sleeve; Color Coded Neck Binding; **AAMI Level 2**

ORDER #	SIZE	COLOR	FINISHING
756566G3	2XL	Blue	70/58 Sleeve Length 33, White Neck Binding
756566G4	XL	Blue	66/52 Sleeve Length 32, Blue Neck Binding
756566G5	Large	Blue	62/52 Sleeve Length 31, Blue Neck Binding



### ComPel® MLR Surgical Gowns

Fluid Resistant; Snap Neck & Tape Tie Waist; 2-Ply Front & Sleeve; Triple Color Coded (Neck/Waist/Cuffs); Aqua Outer Ply; White Inner Ply w/Negastat; Offset Sleeve Design; **AAMI Level 3**

ORDER #	SIZE	COLOR	FINISHING
7567B213	2XL	Aqua	70/58 Sleeve Length 33, White Color Coding
7567B214	XL	Aqua	66/52 Sleeve Length 32, Aqua Color Coding
7567B215	Large	Aqua	62/52 Sleeve Length 31, Blue Color Coding



### ProMax® Surgical Gowns

Maximum Protection; Snap Neck & Tape Tie Waist; Single Ply Trilaminate Front; ComPel® MLR Above Yoke; Triple Color Coded (Neck/Waist/Cuffs); 2-Ply Tri/Bilaminate Offset Sleeve Design; **AAMI Level 4**

ORDER #	SIZE	COLOR	DIMENSIONS AND FINISHING
7567P313	2XL	Aqua	79.5" Sweep, 55" Length, White Color Coding
7567P314	XL	Aqua	73.375/52, Aqua Color Coding
7567P315	Large	Aqua	67.25/52, Blue Color Coding

## SURGICAL TOWELS



### SofSorb®

Low Linting; 100% Cotton

Colors: A C

DESCRIPTION	ORDER #	SIZE	COLOR
Surgical Towel	491111G1	17x32	Alpine
Surgical Towel	491111G3	17x32	Ceil

## SURGICAL COVERS



### WrapPel®/ComPel®/XTR Mayo Stand Covers

100% Polyester

DESCRIPTION	ORDER #	SIZE	COLOR	FEATURES
Mayo Stand Cover	27711702	22x54	Blue	22x29.5 XTR Pad
Mayo Stand Cover	27711802	27x54	Blue	27x29.5 XTR Pad



### ComPel® Back Table Covers

100% Polyester

DESCRIPTION	ORDER #	SIZE	COLOR	FEATURES
WrapPel®/ComPel®/XTR	27710812	60x90	Blue	30x70 XTR Pad
ComPel®	27751702	22x54	Blue	22x54 2-Ply ComPel® Pad
ComPel®	27760812	60x90	Blue	2-Ply ComPel® Pad
WrapPel®/ComPel®/XTR	27764332	45x70	Blue	28x50 XTR Pad



# Surgical Products

HAMPER BAGS



## ComPel® Liquid Resistant Hamper Bags

100 Block Grid; Seamless Bottom; Ropeless; Hooded

Colors: W Y

DESCRIPTION	ORDER #	SIZE	COLOR
Hamper Bag	67150000	30x40x18	White
Hamper Bag	67150090	30x40x18	Yellow
Hamper Bag	67151000	40x40x25	White
Hamper Bag	67151090	40x40x25	Yellow



## Liquid Resistant Hamper Bags

100% Polyester; Seamless Bottom; Ropeless; Hooded

Colors: M Y

DESCRIPTION	ORDER #	SIZE	COLOR
Hamper Bag	67148022	30x40x18	Misty
Hamper Bag	67148091	30x40x18	Yellow
Hamper Bag	67152822	40x40x25	Misty
Hamper Bag	67152891	40x40x25	Yellow



# THE FUTURE IS REUSABLE

## **SurgiTex™ Reusable Surgical Textile Solutions**

The SurgiTex™ Surgical Textile Solutions system combines our clinical expertise and innovation. We offer a reusable, in-house surgical pack, drape, and gown system, completely customized to a customer's facility, providing customers greater control over their surgical textile programs.

SurgiTex™ Consultative Services help you realize the maximum benefits from our reusable surgical products. Our team of experts and clinicians will analyze every aspect of your surgical pack processing and develop a customized plan that improves quality, lowers cost, increases efficiency, and reduces waste.

We can provide engineering, clinical training, quality assurance, and technical service support. Hospitals that have taken advantage of our SurgiTex™ system have realized significant savings.







# Interiors

From design consultation to fabric development to fabrication and installation, our turnkey approach fosters collaboration and progressive thinking with one goal in mind: Your success.

Our passion for customer success and relentless pursuit of making a positive impact on the world are guiding principles at Standard Textile. We live these principles, daily.

If we can leverage our eight decades of experience to help our customers achieve their goals while helping to improve the experience of others, then that's what we consider our standard for success.

# Turnkey Solutions

FOR CUSTOM PROJECTS

## QUALITY FABRICATION

Our custom fabricated products are of the highest quality, created and tested by professionals.



## ESTIMATING

We offer fast, accurate quotes for your project.



## DESIGN CONSULTATION

Work with our team of interior designers to find the perfect patterns, fabrics, and products.



## VALUE ENGINEERING

We understand the needs of matching your budget with your vision.



## MEASURING

Accurate measurements ensure custom pieces are a perfect fit.



## PRODUCT DEVELOPMENT

Partner with us and we will help innovate, customize, and create your unique design.



## PRODUCT TESTING

Our on-site product testing laboratory allows us to uphold our commitment to the highest possible quality assurance.



## INSTALLATION

We have a team of dedicated professional contractors located throughout the country to handle installation.



## PROJECT MANAGEMENT

Minimize the complexity of your project. From pre-planning to on-time delivery, we can help.

## QUALITY ASSURANCE

A final walkthrough is conducted to ensure specifications, installation, and quality expectations are successfully met.

# Privacy Curtains



Design plays a key role in optimizing patient privacy, comfort, and safety. From the design of a tracking system to patterns, colorways, and treatments of fabrics, a responsible design can evoke a sense of wellness, build high performance, and protect patients and caregivers. We approach each project with your needs in mind.





URSULA/LAPIS PRIVACY CURTAIN  
FOUNDATION/PUMICE QUILT  
REGINA/MICA SOLAR SHADE  
BLITZ/PUDDLE CHAIR UPHOLSTERY  
MERCURY/INDIGO SOFA UPHOLSTERY

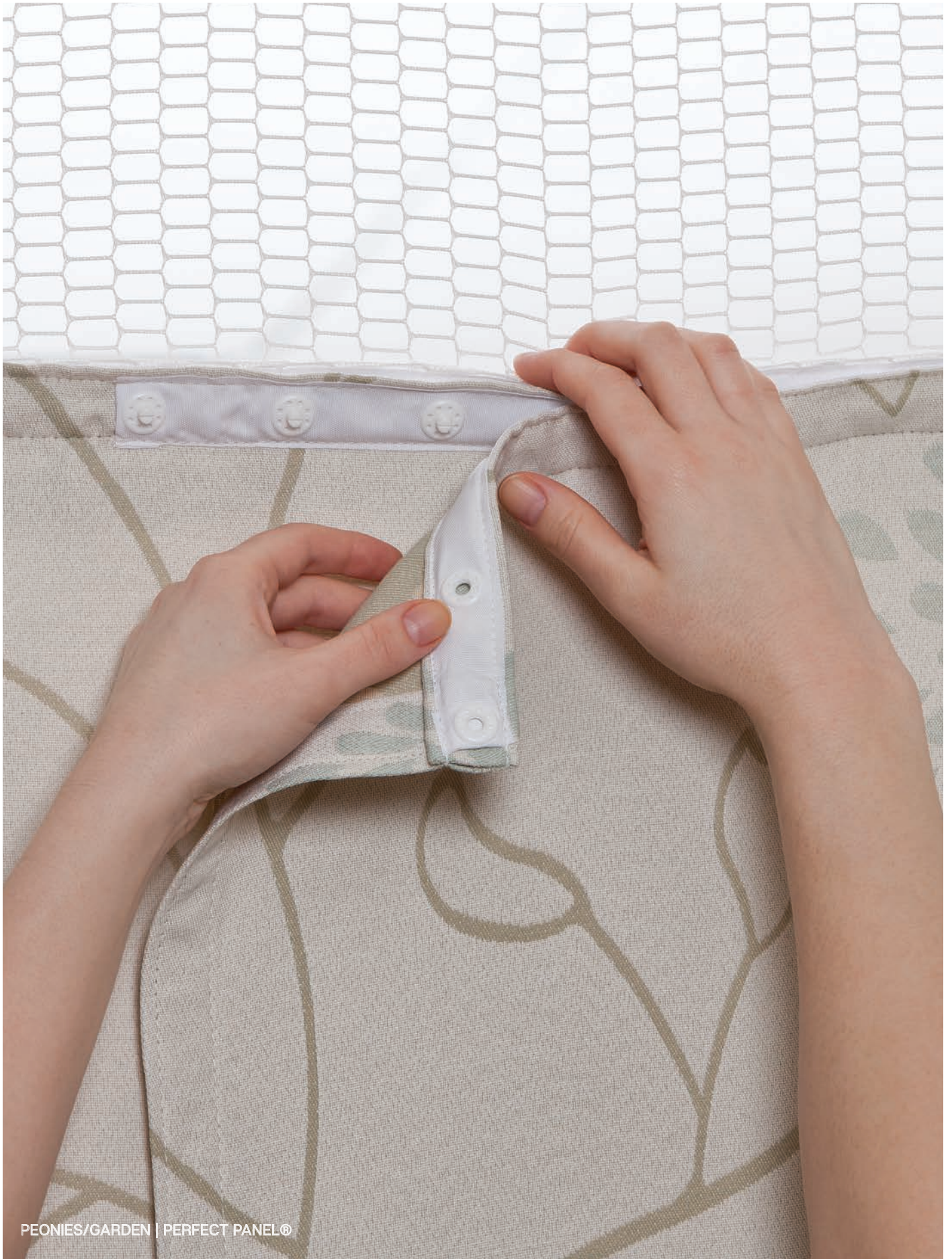
We're the most experienced privacy curtain fabricator in the country, serving some of the largest healthcare systems. We've manufactured privacy curtains for decades, and it shows in the high quality we deliver. Our privacy curtains are manufactured in the USA by a dedicated team that takes pride in their workmanship.

Privacy curtain offerings include:

- TRADITIONAL
- DISPOSABLE
- PERFECT PANEL®
- ON THE RIGHT TRACK®

We offer an extensive line of exclusive fabrics that are inherently flame retardant. Impact Technology® is an option to protect curtains from microbial growth, stains, and splashes. Fabrics meet or exceed all ACT performance standards.

We also manufacture using customer-owned material.





## PRIVACY CURTAINS

### Traditional

Our traditional privacy curtains include a CubeControl® label that indicates curtain size and room location to save time when reinstalling after cleaning. Paired with our CubeControl® Curtain Management App, curtains can be quickly scanned to improve inventory management, confirm compliance with facility cleaning frequency policy, and promote a cleaner environment for patients and staff.

We offer various colors, sizes, and types of privacy curtain mesh. And when you choose a fabric from our privacy curtain collection, you experience significant cost savings.

Quality and durability are tested on full-size curtains in our onsite laboratory.

### Disposable

A great solution for high-infection areas and emergency departments because of the ability to change out the curtains more frequently. Available in a variety of fabrics and styles.

Disposable privacy curtains can also be custom printed. Supply your own art or work with our design team to create the desired expression for your environment.

On The Right Track® is another option for easier replacement of disposable privacy curtains. See page 43 for more information about On The Right Track®.

### Perfect Panel®

Perfect Panel® saves time and costs. Panels are attached with an easy snap system, allowing for the replacement of only soiled panels, not the entire curtain. This also avoids the need to remove the mesh and the potential for hanging the wrong curtain size.

Perfect Panel® offers tremendous cost savings by reducing laundering costs and attic stock.

The overlapping panel design ensures patient privacy. Best of all, Perfect Panel® can be made with any Standard Textile fabric to meet specific design requirements.

Perfect Panel® fabric is available with Impact Technology®.





JUNCTION/FROST | ON THE RIGHT TRACK®

## **PRIVACY CURTAINS**

# On The Right Track®

On The Right Track® makes it easier to replace privacy curtains, improving productivity and efficiency. The patented split-ring technology allows one person to exchange a curtain in less than one minute.

## **FLEX-ON RINGS**

The Hookless Flex-on rings are a patented split-ring design that allows staff to slip curtain rings easily over the track. Instead of separating curtains from hooks, chains, or other individual carriers, Flex-on rings allow one person to exchange a curtain quickly and easily.

## **THE TRACK**

On The Right Track® privacy curtains work seamlessly with a track engineered for durability and longevity. The track can be installed directly into any ceiling or retrofitted into an existing track. The powder-coated aluminum rails are reinforced every two feet for solid support. Pole extensions are available to drop the track up to 18 inches to achieve a universal curtain height throughout a facility.

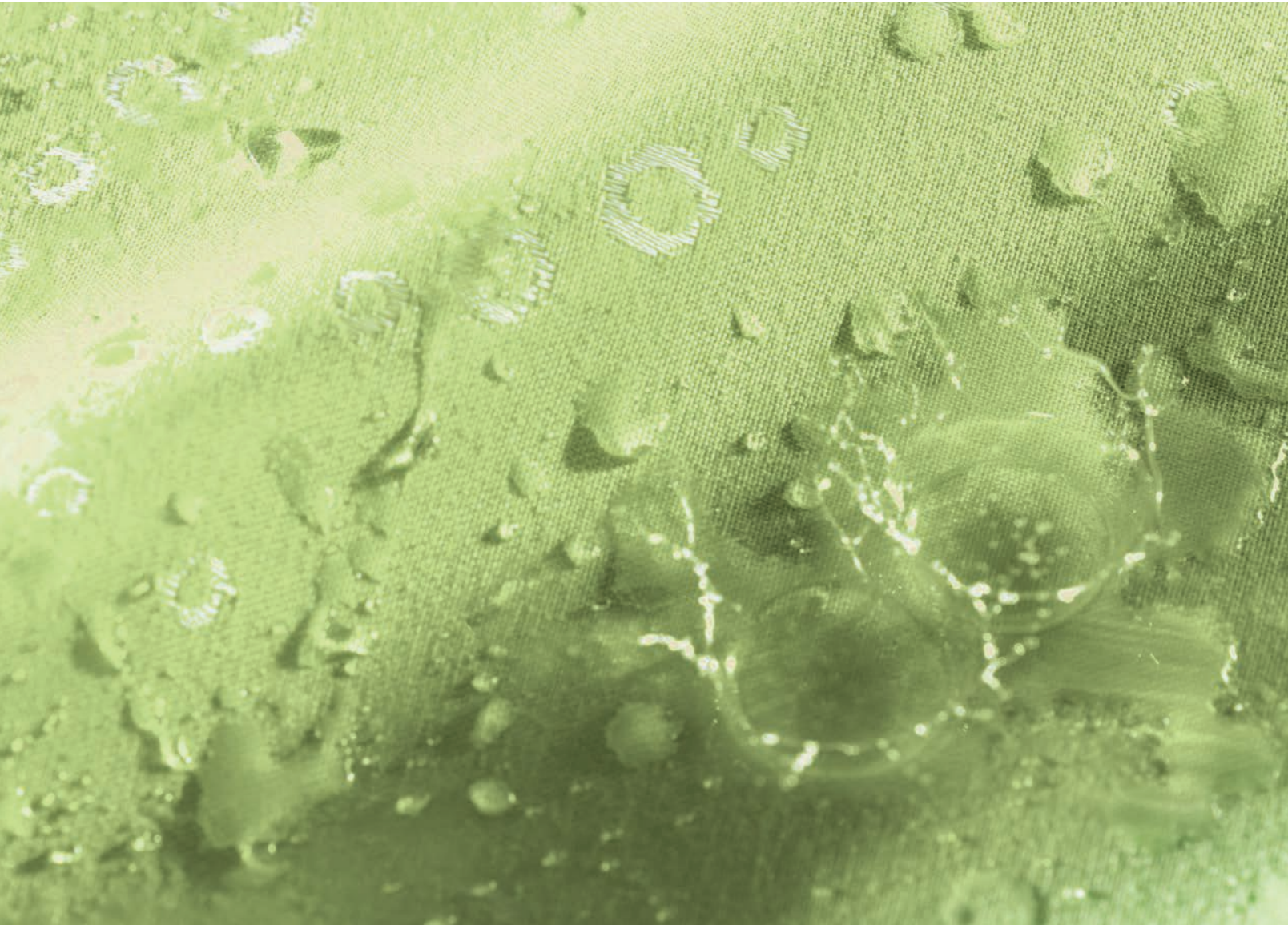
## **THE GRABBER®**

The Grabber® is an accessory specifically designed for safety and increased efficiency. With The Grabber®, privacy curtain exchanges can be accomplished without the use of a ladder. A curtain is transferred from The Grabber® to the track in just seconds.

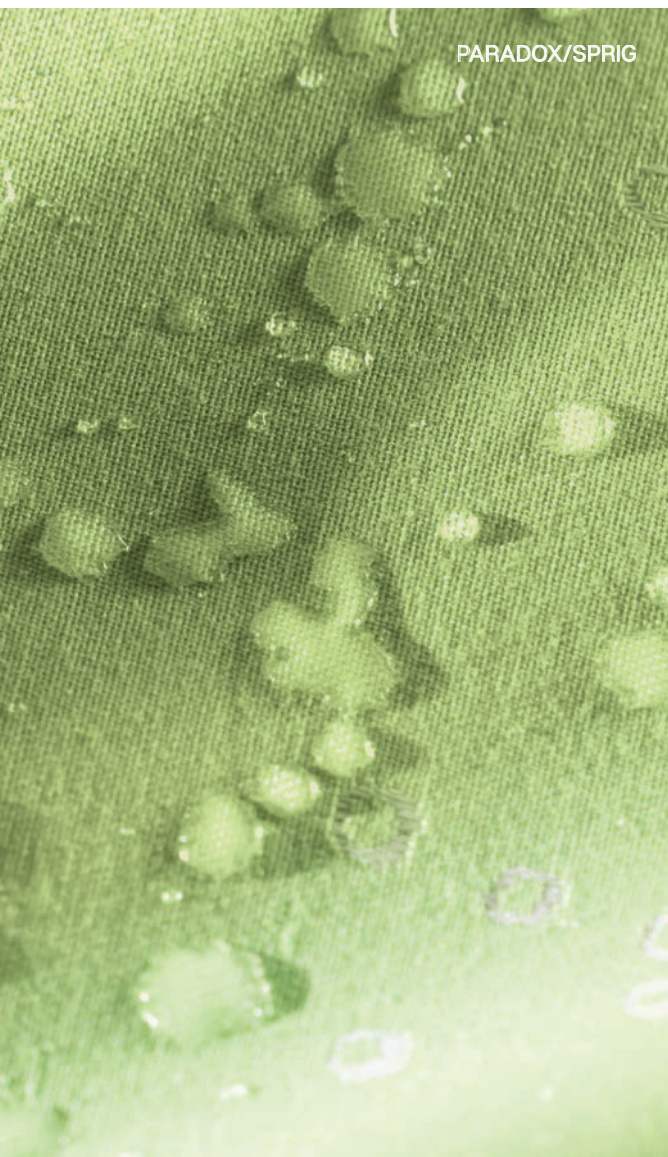
On The Right Track® privacy curtains can be made with any Standard Textile fabric to meet specific design requirements.



# Impact Technology®



Helping the healthcare industry in the fight against microbes is a good thing. Using potentially harmful toxins to do it is not. That's why Standard Textile uses Impact Technology® for our privacy curtain, drapery, bedspread, and shower curtain fabrics.



## An Antimicrobial Solution

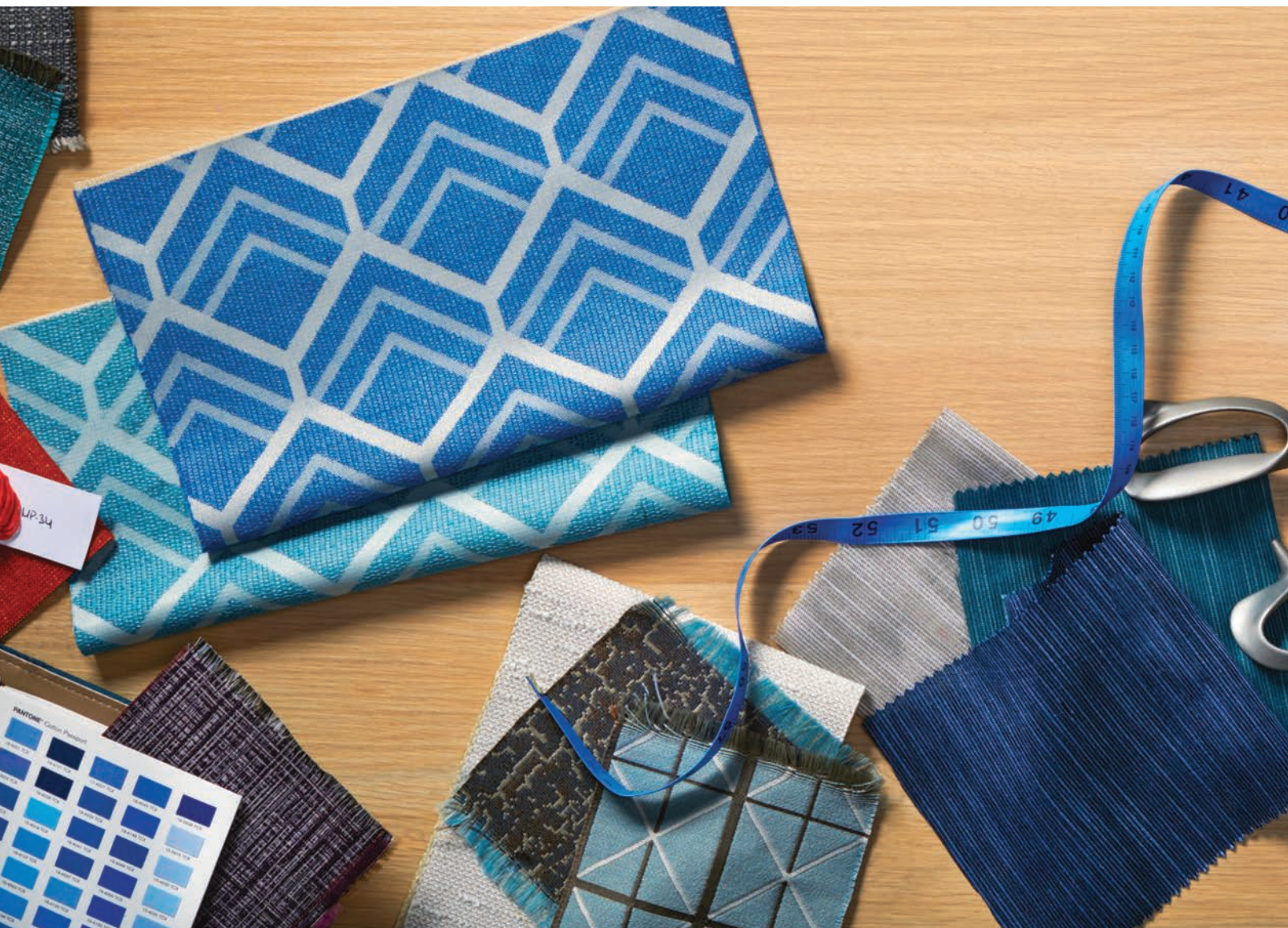
Our exclusive Impact Technology® helps you maintain the safest possible environment for your patients and your staff. It gives our privacy curtains, shower curtains, drapery, and bedspread fabrics resistance to flames, stains, splashes, and microbial growth.

Impact Technology® leverages Aegis Microbe Shield® on our solid fabrics and Alta™ on our patterned fabrics. Broad-spectrum antimicrobial protection inhibits the growth of odor- and stain-causing bacteria, fungi, algae, and yeasts for the life of the product. It will not leach into the skin or into the environment, providing an additional level of protection.

Impact Technology® can be applied to any fabric.



# Fabrics



We have an extensive fabric collection designed specifically for healthcare, hospitality, educational, and commercial environments.

FABRICS FEATURED: QUELL, CAVA, GLENGARRY,  
WINK, GROOVY, STAR GATE, DISCOTEQUE,  
CHESAPEAKE, MELBOURNE, MANCHESTER



## Fabrics

From performance fabrics to eco-intelligent to anti-microbial to bleach cleanable. Our fabric offerings are precisely selected with your needs in mind.

Fabrics resistant to stains, moisture, and UV are also available. Fabrics meet or exceed all ACT performance standards.

Browse now at: [standardtextile.com/fabricgallery](https://standardtextile.com/fabricgallery)



# Upholstery Fabrics



When it comes to covering bolsters, cornice boards, lounge seating, sofas, and chairs of all types, you need fabrics that perform as amazingly as they look. Our high-performance and stylishly designed fabric selections can be used for a variety of projects, both indoor and out.





# Stunning Fabrics That Perform

We offer a variety of performance-based upholstery fabrics that balance style with incredible durability and toughness.

Trusted partners include:

- SUNBRELLA® CONTRACT COLLECTION
- CRYPTON®
- BELLA-DURA®

# Solar Shades



Standard Textile is a global leader in the provision and installation of solar shades—a highly durable window treatment that offers the beauty of outdoor views, while still maintaining privacy.



NORTH ALABAMA MEDICAL CENTER



## Manual

Solar shades that are raised and lowered manually. Simple yet effective. Allows patients and staff the freedom to control the amount of light they let into their room.

## Motorized + Automatic

Solar shades that can be raised and lowered mechanically. Intuitive controls give patients and staff an added sense of modern luxury.



CHASE/BEACH BLACKOUT  
BLIZZARD/SNOWFLAKE SHEER

## **SOLAR SHADES**

# Decorative Shadecloths

Fusing design with functionality, richness, and contemporary style, our bold and exciting decorative shadecloths enhance the design of your room. Available in blackout, light filtering, and sheer.

## Blackout

Blackout fabric provides a reassuring sense of privacy while providing a clean, contemporary look. Blackout fabrics range from simple designs to more elegant options.



# Window Treatments



PORTIER/TRAVERINE DRAPERY  
DYNAMO/OYSTER SHEER

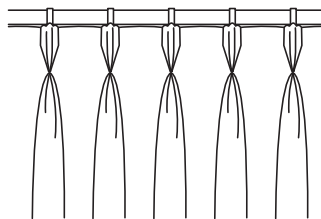
We've been manufacturing window treatments for decades, and have developed a solid process that ensures exceptional quality and timely deliveries. Ownership of the manufacturing process, from beginning to end, allows us to control each step of production.

Our window treatment offerings include:

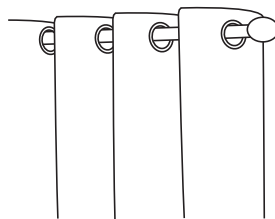
- DRAPERY
- SHEERS
- ROMAN SHADES
- BLINDS
- TOP TREATMENTS
- SOLAR SHADES

## Drapery + Sheers

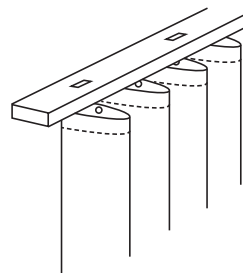
Available as pinch pleated, grommeted, ripple fold, Accordia-Fold®, and rod pocket.



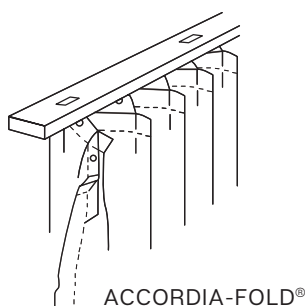
PINCH PLEATED



GROMMET TOP



RIPPLE FOLD



ACCORDIA-FOLD®



LUNKEN/INDIGO ROMAN SHADE





## WINDOW TREATMENTS

### Roman Shades

A classic and timeless look, roman shades can be manufactured with drapery and sheer fabrics.

### Traditional Roller Shades

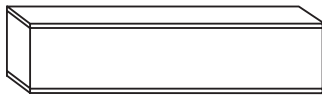
Shadecloths are available in blackout, light filtering, and sheer.

### Blinds

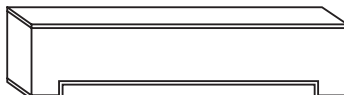
Easy to control light level. Also easy to clean. Available in 2" faux wood, mini, and vertical.

### Top Treatments

We manufacture custom valances and cornice boards. Board mounted valances, swags, and cascades are also available.



STRAIGHT CORNICE



STEPPED CORNICE



INVERTED BOX PLEAT VALANCE

# Shower Curtains



We have an extensive line of shower curtains for healthcare environments, including fabric, vinyl, and sustainable solutions.



## Hookless®

Hookless® shower curtains deliver time-saving convenience along with durable beauty. Built-in rings allow installation and removal in less than 45 seconds. Rings are available in chrome, matching colors, or can be concealed.

The ultrasonic hem allows water to flow freely from the bottom of the curtain, reducing moisture build-up that can give rise to mold and mildew.

An optional translucent window allows light into the shower.





## SHOWER CURTAINS

### Grommated

Rust-proof metal grommets minimize curtain wear and tear. A grommated shower curtain slides easily over the rod and falls into neat, clean folds.

Extremely functional and user-friendly, grommated shower curtains can be installed, removed, opened, or closed in an efficient and convenient manner.

### Buttonhole

Showers curtains are available with reinforced sewn buttonholes to accommodate curtain rings. This style provides an uninterrupted visual expanse, accentuating the color and pattern of the curtain.

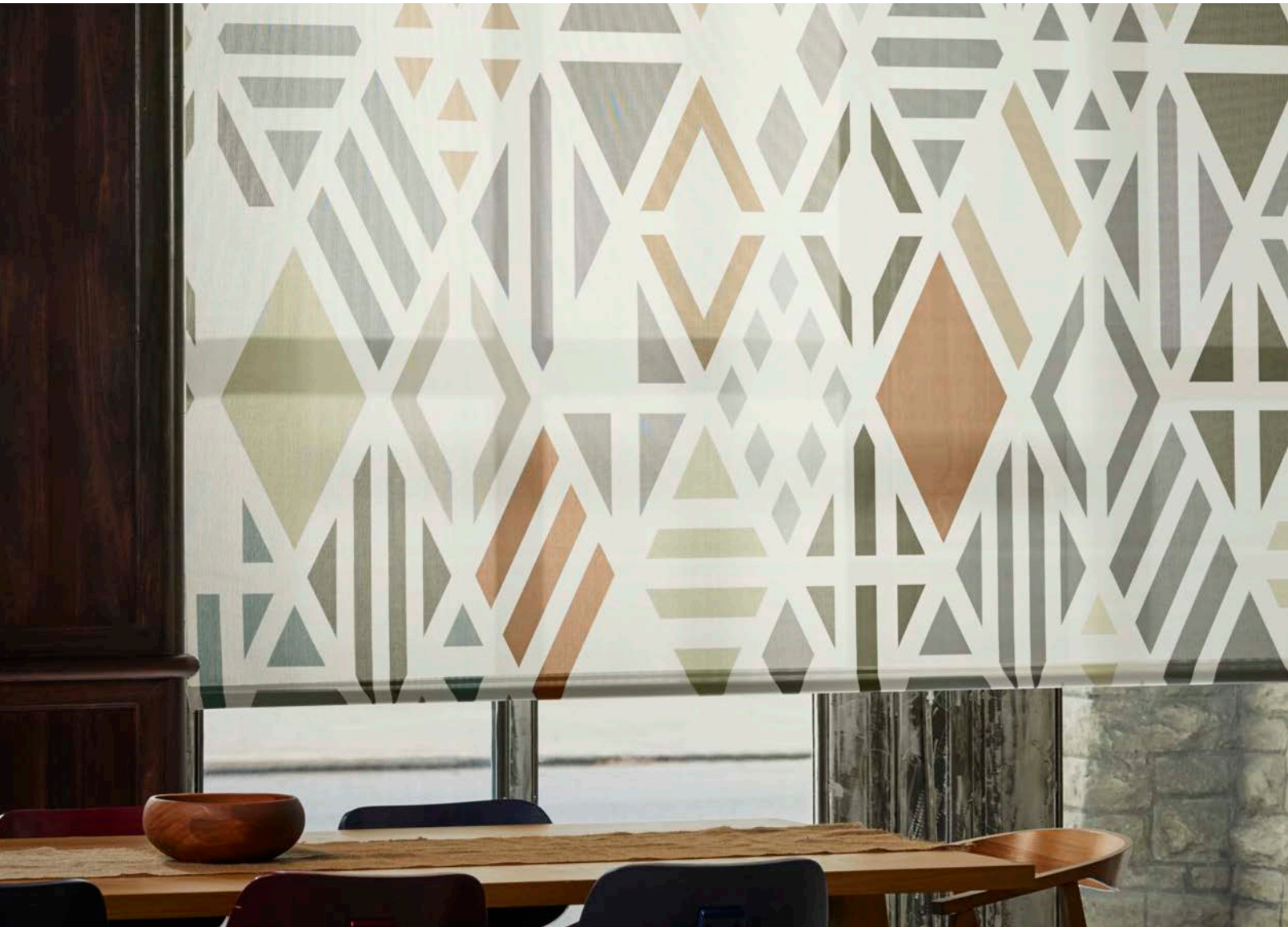
### Vinyl

Vinyl shower curtains are available in a variety of white tones and design-inspired colors, from classic bright optic white that makes a small room look larger to on-trend hues to make the room look fresh and current.

### Hardware

Shower curtain hardware is available to match your unique needs.

# Custom Printed Solutions



Our digital printing solutions provide unlimited options for designing environments that promote a sense of comfort and well-being. From windows to bedding to privacy and shower curtains, digital printing is a cost-effective solution that brings unique design ideas to life.





## ImagePoint®

What will you create?

Bring your imagination to life with ImagePoint® printed décor. Unlimited color selection. Boundless design possibilities. Supply your own art or work with our talented designers to conceive your special style. Coordinate design elements—duvet covers, top sheets, pillows, shams, bed skirts, bolsters, solar shades, and even draperies.

With digital storage, your exclusive design is always available, never discontinued. Small re-order quantities are welcome; order only what you need. Permanent colors penetrate the fabric for lasting brightness, wash after wash. Immerse your patients and residents in comforting design.

# Clarus Healthboard





Healthboard's non-porous, bacteria-resistant surface makes it the ideal communication tool for hospital rooms, nurse stations, and other areas where patient health is the highest priority. Fabricated from safety glass, Healthboard's dry-erase surface offers rich color palettes through two customizable product line options, ColorDrop and Transition.

## ColorDrop

ColorDrop features graphics printed directly to glass using proprietary technology from Clarus. Design your own beautifully colored, intricately detailed graphics to print directly to the back of your glassboard.

## Transition

Transition is a removable graphics system that allows you to customize your glassboard's purpose. Interchange charts, designs, and other dynamic information with this state-of-the-art solution. All Transition graphics are fully customizable and printed in complete, high-resolution color.

Choose from over 50 popular Healthboard design templates or provide your own artwork.



For 80 years, Standard Textile has built a reputation for understanding the unique challenges our customers face and having a keen appreciation for the ever-evolving nature of their business. **We're committed to helping customers succeed. It's what drives us to continually develop innovative textiles that deliver exceptional value.**

Leveraging textile design, manufacturing, and laundry expertise, and our vertically integrated global infrastructure, we serve customers in the healthcare, hospitality, interiors, and consumer markets worldwide. Standard Textile is highly committed to serving our Nation's Veterans, Military Personnel, and Federal Employees.

## Featured Product Lines

Bedding & Bath  
Consultative Services  
Fabrics & Fabrication  
Incontinence Products  
Mattress Pads & Encasements  
Privacy & Shower Curtains  
Protective Products  
Staff & Patient Apparel  
Surgical Products  
Window Treatments & Solar Shades

## National & Regional Contracts



## Current Government Affiliations

ALM—Association of Linen Management  
ARTA—American Reusable Textile Association  
ASHES—American Society for Healthcare Environmental Services  
JCAHO—Joint Commission on the Accreditation of Healthcare Organizations

Contact Lyddane Knewitz, National Director of Government Operations,  
at [Lknewitz@standardtextile.com](mailto:Lknewitz@standardtextile.com) or 817.800.9044.

# Notes

[illegible]



800.999.0400  
standardtextile.com

©2022. Standard Textile Co., Inc. All rights reserved.

**STANDARD**  
TEXTILE est. 1940

GOVERNMENT CATALOG