



newt^on
high-speed lite-lift®

STANDARD
TEXTILE est. 1940



Revolutionize shade control with our most elegant manual shade option.

A CHAIN-FREE SOLAR SHADE EXPERIENCE

Gone are the days of unsafe, unappealing chains. The Newton® offers a smooth, intuitive wand-controlled operation that brings elegance to your fingertips. This patented chain-free solar shade design simplifies operation, enhances durability, and improves product safety. Say goodbye to the hassles of traditional shades and welcome a new era of simplicity.

Choose from the standard wand or a more accessible loop wand as an ADA option. Both wands require less than 5 lbs. of force to operate, ensuring accessibility for all. Manual lowering is also possible by pulling on the bottom bar without risk of damage to system.

TAILORED TO YOUR SPACE

Whether a welcoming hotel lobby, a tranquil hospital room, or a bustling student union, the Newton® offers flexibility to suit any client's specific needs. Currently available as a single bracket option, you can pair an inside-mount sheer with an outside-mount blackout for the ideal sleep settings. On blackouts, we recommend a 6" overhang on each side of the window for optimal room-darkening.

Choose from our range of blackout and light-filtering sheers to match your decor. If you desire something unique, collaborate with our skilled design team to create a custom print that's as one-of-a-kind as your space. The possibilities are limitless!

Embrace elegance, durability, and accessibility with every pull of the wand. Experience the future of chain-free solar shades with the Newton®.

ALUMINIUM FASCIA

Newton High-Speed Lite-Lift

DETAILS

- Patented chain-free solar shade design.
- Counter balance shade system delivering smooth operation lowering and raising shades, less than 5 lbs. of pull force.
- Non-friction module (clutch) allows lowering shade by bottom hem bar.
- Noise reducing proprietary spring encased in resin.
- Available in single shade only. For light control, inside mount sheer and outside mount blackout are recommended.
- Max Width up to approximately 144" W x 132" L, Minimum width is 15" W x 18" L (based on fabric selection).
- Shade comes with installation brackets, end caps included if installing outside mount.
- Wands can be operated from all angles due to rubber gasket at top of wands.
- Fascia is 3.625" H, Satin finish.

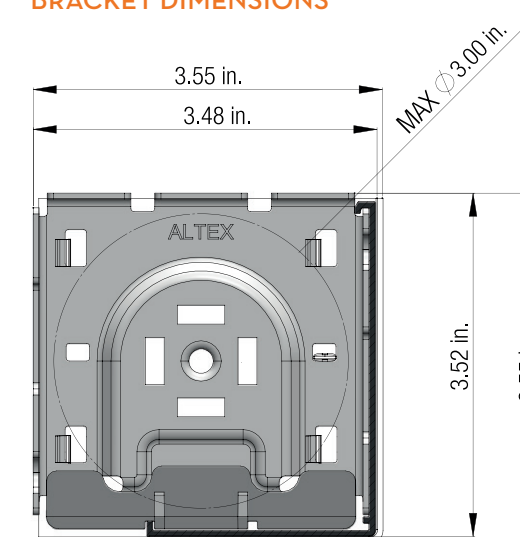
OPTIONS

- Types of installation - see page 13.
- Regular and reverse roll available.
- 1-1/2" bottom bar, standard fabric wrapped aluminum slat, open ends. Sealed ends available for upcharge.
- Wands for ADA compliance available - see page 9.
- Standard wand positions - see page 7.
- Wand lengths - see page 8.
- Available finish color options - see page 12.
- Magnetic hold down for wands (inside mount only) available for upcharge.
- Side channels.
- Fabrics - blackout, 1%, 3%, 5% options, custom printing available on all openness options.

ALUMINUM FASCIA



BRACKET DIMENSIONS



OPEN ROLL (NO FASCIA)

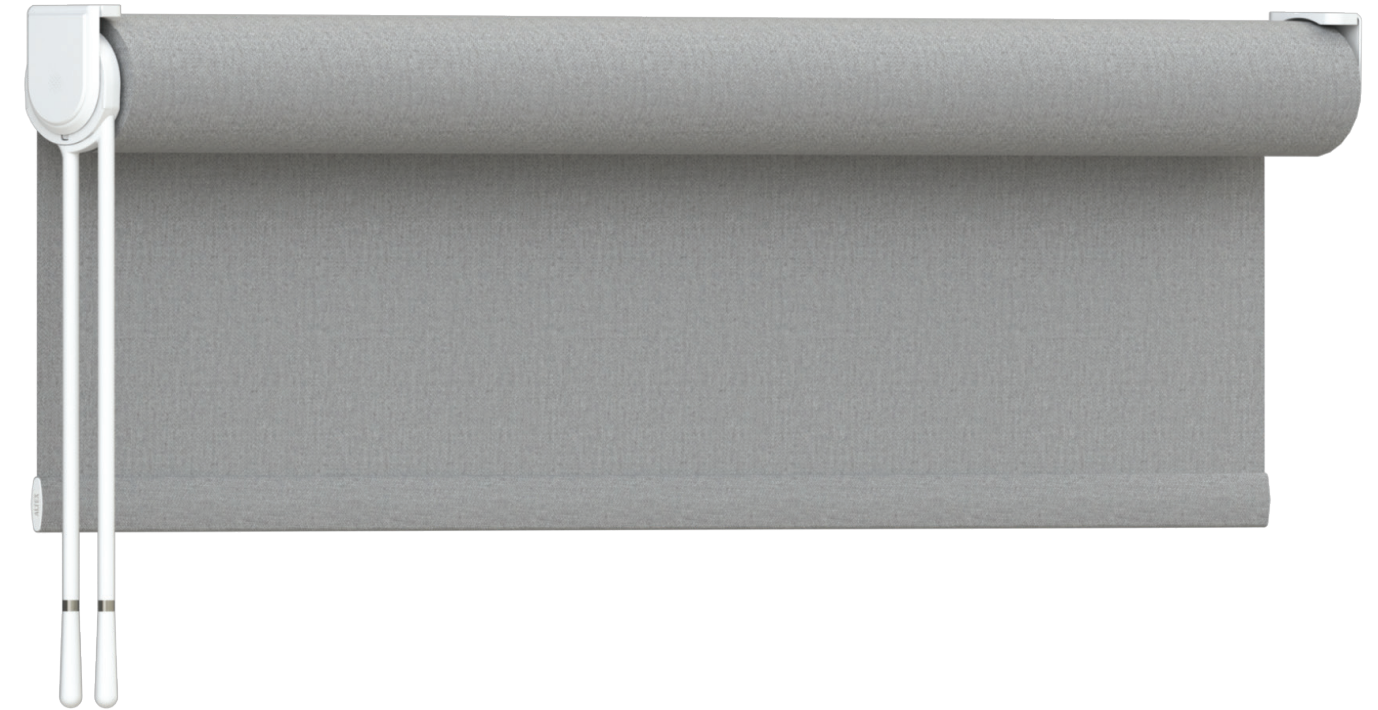
Newton High-Speed Lite-Lift

DETAILS

- Patented chain-free solar shade design.
- Counter balance shade system delivering smooth operation lowering and raising shades, less than 5 lbs. of pull force.
- Non-friction module (clutch) allows lowering shade by bottom hem bar.
- ALS (Altex® Locking System) system integrated.
- Noise reducing proprietary spring encased in plastic.
- Available in single shade only. For light control, inside mount sheer and outside mount blackout are recommended.
- Max Width up to approximately 144" W x 132" L, Minimum width is 15"W x 18" L.
- Shade comes with installation brackets, end caps included if installing outside mount.
- Wands can be operated from all angles due to rubber gasket at top of wands.

OPTIONS

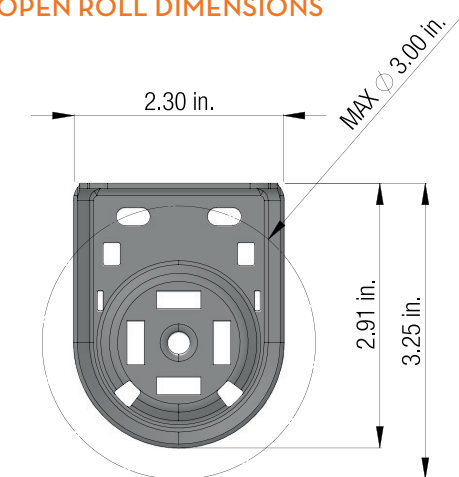
- Types of installation – see page 15.
- Regular roll and reverse roll available.
- 1-1/2" bottom bar, standard fabric wrapped aluminum slat, open ends. Sealed ends available for upcharge.
- Wands for ADA compliance available – see page 9.
- Standard wand positions – see page 7.
- Wand lengths – see page 8.
- Available finish color options – see page 12.
- Magnetic hold down for wands (inside mount only) available for upcharge.
- Fabrics – blackout, 1%, 3%, 5% options, custom printing available on all openness options.



OPEN ROLL SYSTEM LIGHT GAP

3/4"	Mechanism Side
1/2"	End Plug Side
3/4"	Leveling Connector Side
11/16"	Multi-Mechanism Junction
11/16"	Tandem Junction

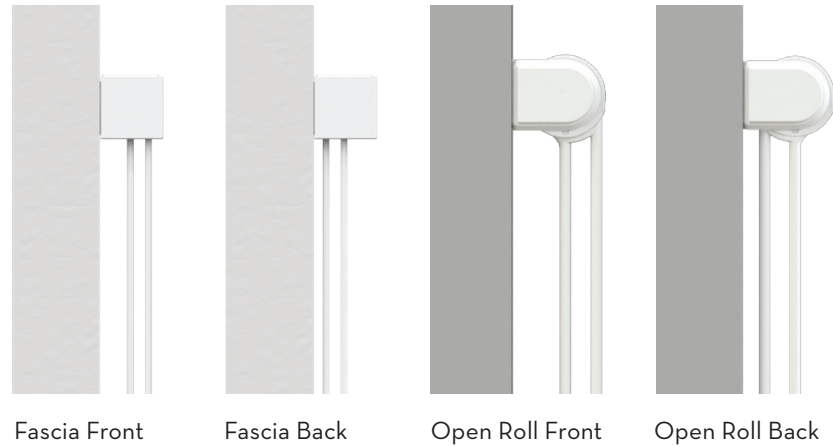
OPEN ROLL DIMENSIONS



STANDARD WANDS

Newton High-Speed Lite-Lift

STANDARD WAND POSITIONS



IMPORTANT

- Wands position may vary depending on the product concealment, the shade configuration and the type of installation. See the chart below for full details.
- For wands position contrary to the standard position, please specify when ordering.

CONCEALMENT	INSIDE WINDOW FRAME INSTALLATION		OUTSIDE WINDOW FRAME INSTALLATION	
	REGULAR ROLL	REVERSE ROLL	REGULAR ROLL	REVERSE ROLL
Open Roll	Front	Front**	Back	Front**
Aluminum Fascia	Front	Front**	Back	Front**

* Position contrary to the standard position not available.

** Back position available, but not recommended since access to the wands would be more difficult.

STANDARD WAND LENGTHS

Distance top of shade to the floor	Standard Wand Lengths
134 1/8" and more	Custom
124 1/8" - 134"	80"
114 1/8" - 124"	70"
104 1/8" - 114"	60"
94 1/8" - 104"	50"
84 1/8" - 94"	40"
84" and less	30"
Exceptions	
Shade Height 18" - 30" inside mount installation	18"
Shade Height 18" and less	inside mount installation not recommended

IMPORTANT

All orders must include measurement of top of shade to the finished floor.

Wand lengths are configured based on this measurement.

COMPONENT OPTIONS

Newton High-Speed Lite-Lift

WANDS

- Aluminum wands are adorned with a chrome-plated steel ring and end with a plastic handle.
- Available ADA option – loop is available in black and white.

MAGNETIC HOLD DOWN

- Magnetic hold down for standard and ADA wands.
- Available option for inside mount shades only.

FASCIA

- Fabric-covering of the fascia is not available.

END CAPS

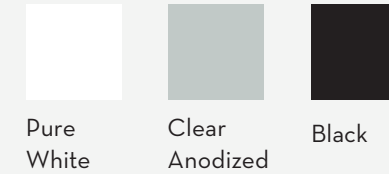
- Plastic end caps.
- Come standard with outside mount open roll and fascia shades only.

BOTTOM BAR

- 1-1/2" fabric wrapped.
- Standard option is fabric wrapped, heat sealed on ends.

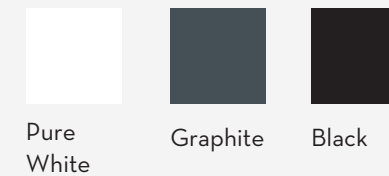
ALUMINUM COLORS

Wands, Magnetic Hold Downs, Fascia



PLASTIC COMPONENT COLORS

End Caps, Handle End on Wand

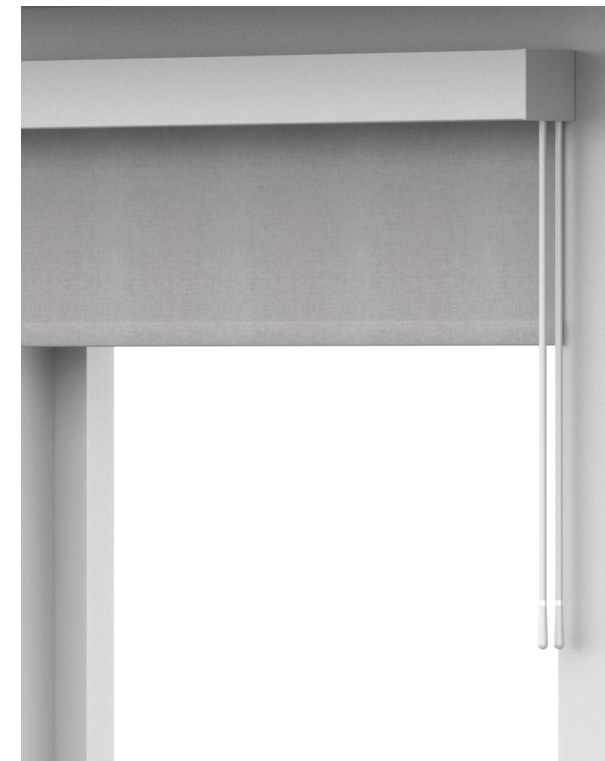
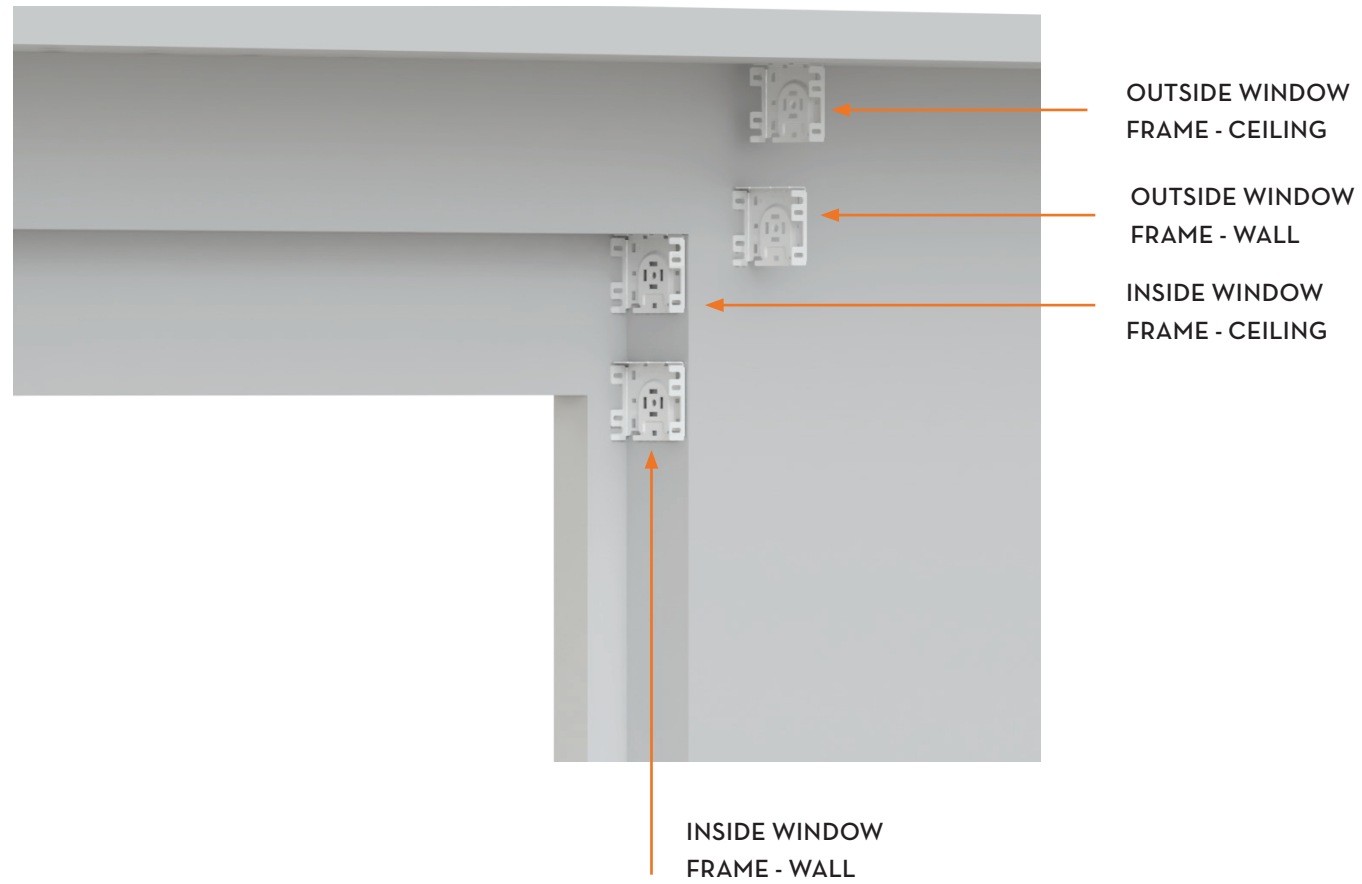


MAGNETIC HOLD DOWN



Device for magnetic wands, for inside mount installation only.

Newton High-Speed Lite-Lift



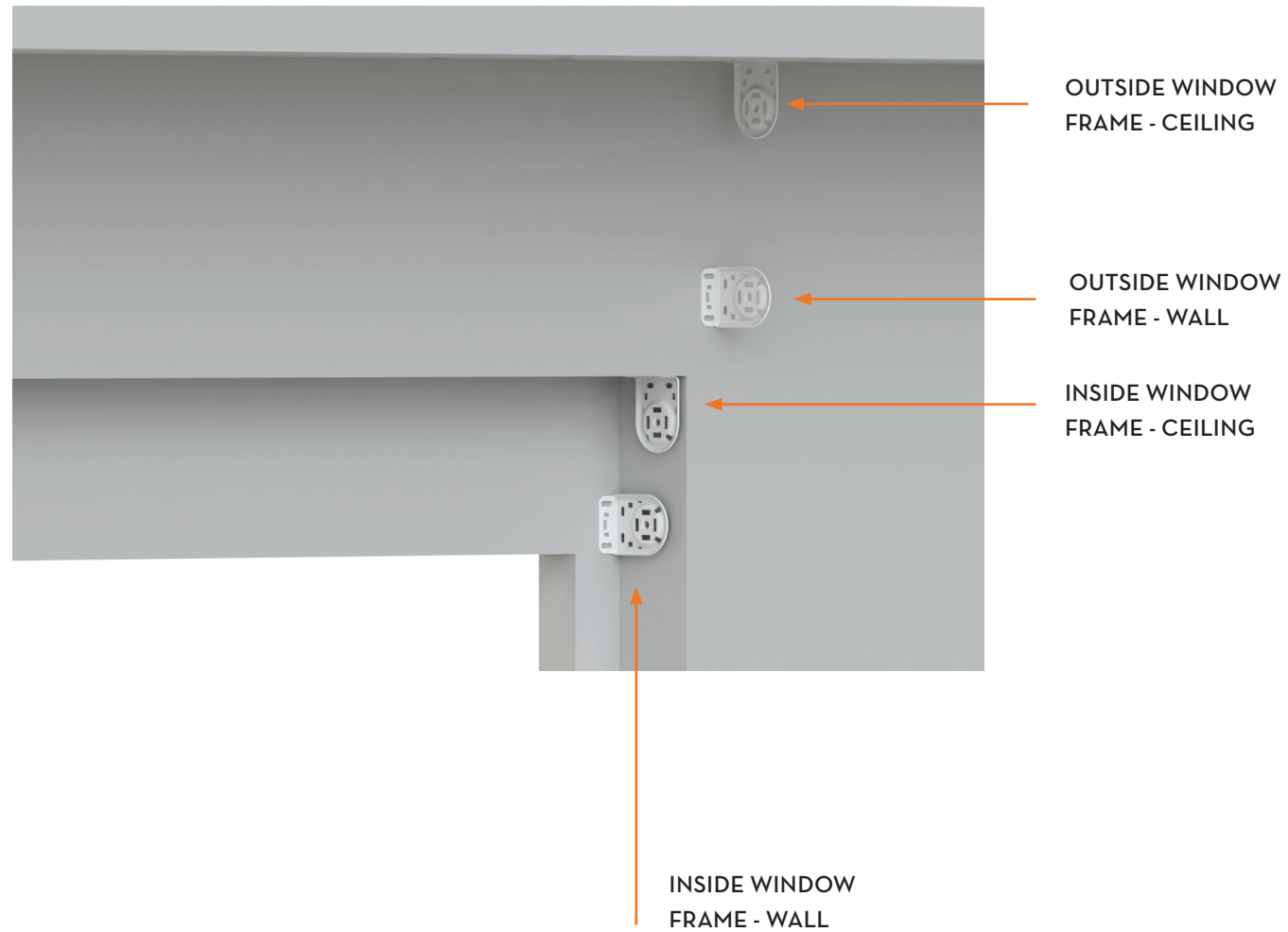
OUTSIDE WINDOW FRAME



INSIDE WINDOW FRAME

Brackets shown are Aluminium Fascia.

Newton High-Speed Lite-Lift



OUTSIDE WINDOW FRAME - CEILING



OUTSIDE WINDOW FRAME - WALL



INSIDE WINDOW FRAME - CEILING

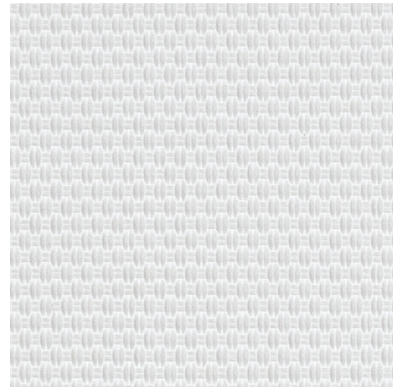


INSIDE WINDOW FRAME - WALL

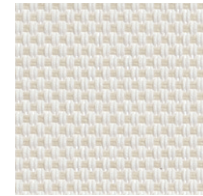
Brackets shown are Open Roll (no fascia).

FABRIC SPECIFICATIONS

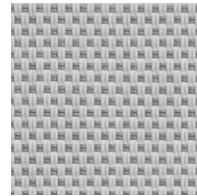
10,000 Series - 10101



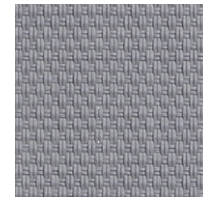
01 Limestone



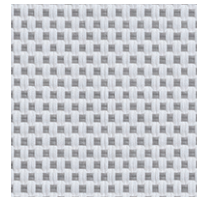
02 Limestone Beige



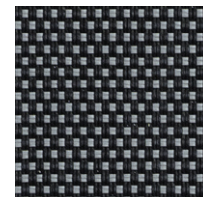
03 Ivory Grey



04 Light Grey



05 Limestone Grey

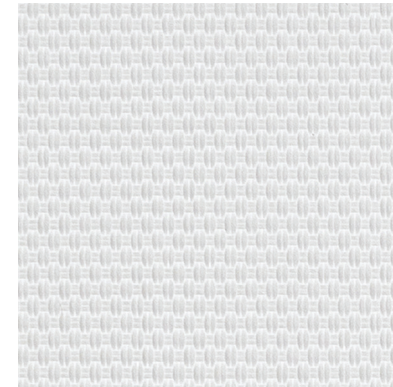


06 Slate Grey

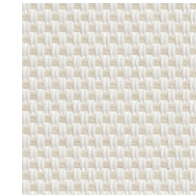
Width	118"
Content	70% PVC 30% Polyester
Openness	1%
Regulatory	NFPA 701
Certifications	OEKO-TEX® Certified UL GREENGUARD® Gold Certified
Attributes	Printable

FABRIC SPECIFICATIONS

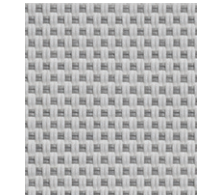
10,000 Series - 10103



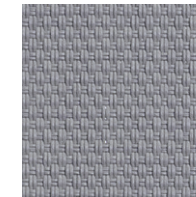
01 Limestone



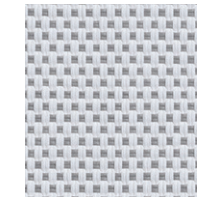
02 Limestone Beige



03 Ivory Grey



04 Light Grey



05 Limestone Grey

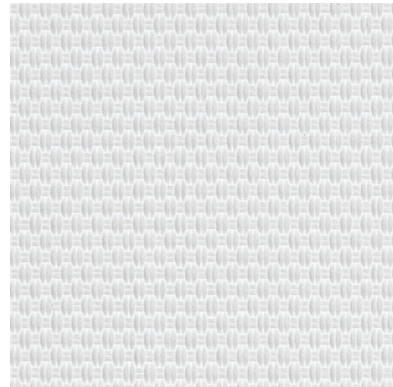


06 Slate Grey

Width	118"
Content	70% PVC 30% Polyester
Openness	3%
Regulatory	NFPA 701
Certifications	OEKO-TEX® Certified UL GREENGUARD® Gold Certified
Attributes	Printable

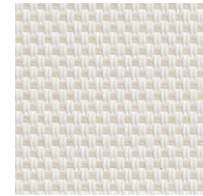
FABRIC SPECIFICATIONS

10,000 Series - 10105

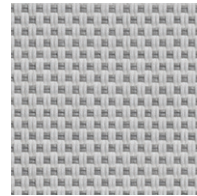


01 Limestone

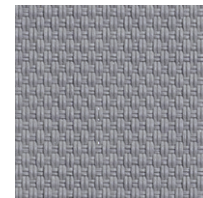
Width	118"
Content	70% PVC 30% Polyester
Openness	5%
Regulatory	NFPA 701
Certifications	OEKO-TEX® Certified UL GREENGUARD® Gold Certified
Attributes	Printable



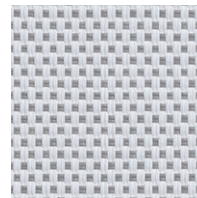
02 Limestone Beige



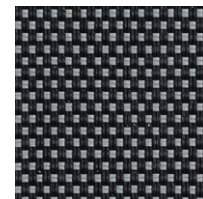
03 Ivory Grey



04 Light Grey



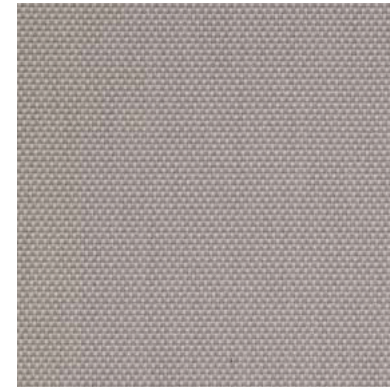
05 Limestone Grey



06 Slate Grey

FABRIC SPECIFICATIONS

E Screen 1%

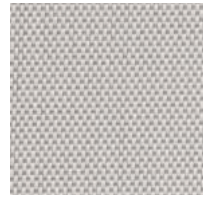


Pearl - Linen

Width	122"
Content	64% Vinyl 36% Fiberglass
Openness	1%
Regulatory	NFPA 701 California Title 19 CAN/ULC-S109-03 Small & Large Flame Test
Certifications	RoHS - Lead Free UL GREENGUARD® Gold Certified
Attributes	Printable Lead Free



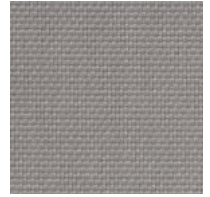
White - White



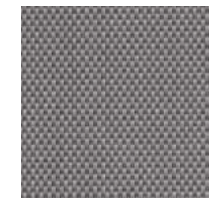
White - Pearl



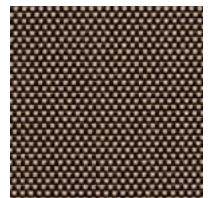
White - Linen



Pearl - Pearl



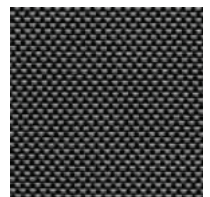
Pearl - Grey



Charcoal - Apricot



Charcoal - Grey



Charcoal - Greystone



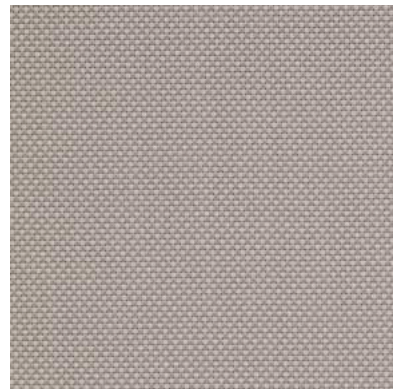
Charcoal - Cocoa



Charcoal - Charcoal

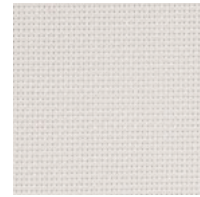
FABRIC SPECIFICATIONS

E Screen 3%

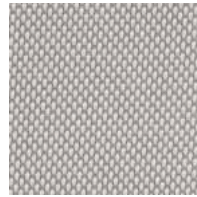


Pearl - Linen

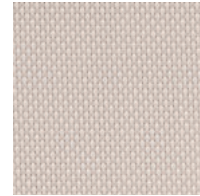
Width	122"
Content	64% Vinyl 36% Fiberglass
Openness	3%
Regulatory	NFPA 701 California Title 19 CAN/ULC-S109-03 Small & Large Flame Test
Certifications	RoHS - Lead Free UL GREENGUARD® Gold Certified
Attributes	Printable Lead Free



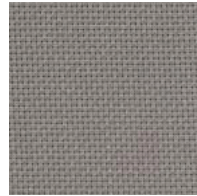
White -
White



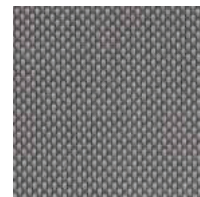
White -
Pearl



White -
Linen



Pearl -
Pearl



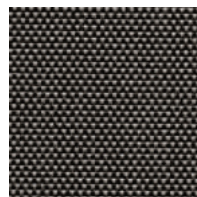
Pearl -
Grey



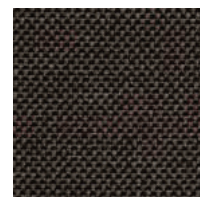
Charcoal -
Apricot



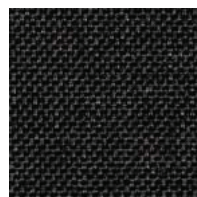
Charcoal -
Grey



Charcoal -
Greystone



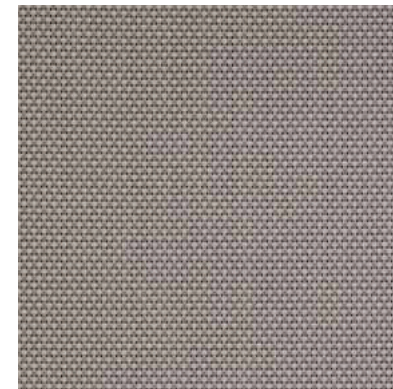
Charcoal -
Cocoa



Charcoal -
Charcoal

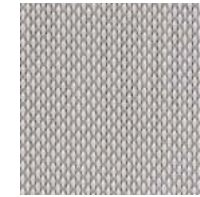
FABRIC SPECIFICATIONS

E Screen 5%

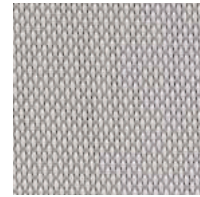


Pearl - Linen

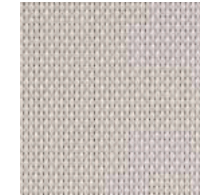
Width	122"
Content	64% Vinyl 36% Fiberglass
Openness	5%
Regulatory	NFPA 701 California Title 19 CAN/ULC-S109-03 Small & Large Flame Test
Certifications	RoHS - Lead Free UL GREENGUARD® Gold Certified
Attributes	Printable Lead Free



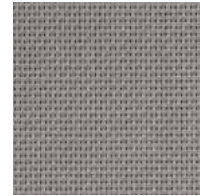
White -
White



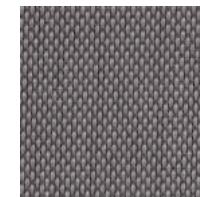
White -
Pearl



White -
Linen



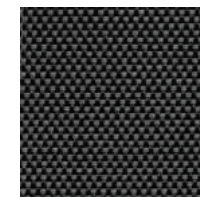
Pearl -
Pearl



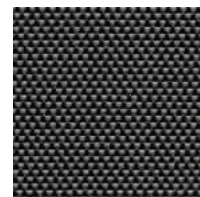
Pearl -
Grey



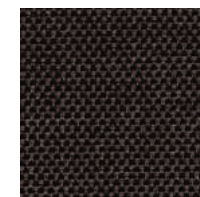
Charcoal -
Apricot



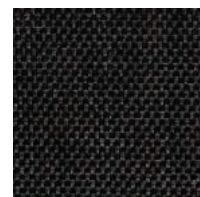
Charcoal -
Grey



Charcoal -
Greystone



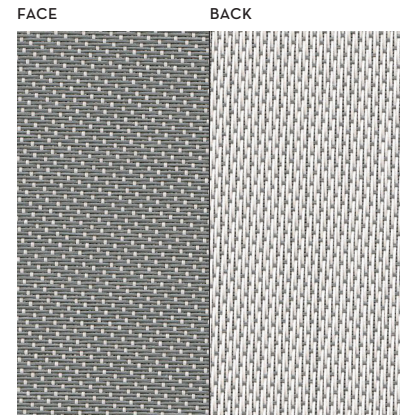
Charcoal -
Cocoa



Charcoal -
Charcoal

FABRIC SPECIFICATIONS

TexScreen 8101-SW2701

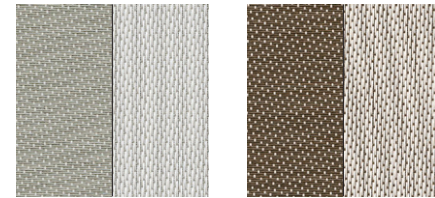


04 Grey-White

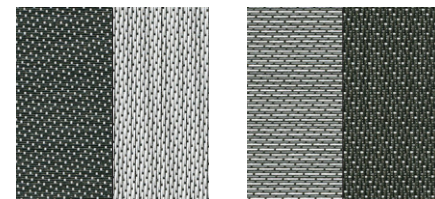
Width	126"
Content	64% Vinyl 36% Fiberglass
Openness	1%
Regulatory	NFPA 701 California Title 19 CAN/ULC-S109-03 Small & Large Flame Test
Certifications	UL GREENGUARD® Gold Certified
Attributes	Printable Microban® Lead Free



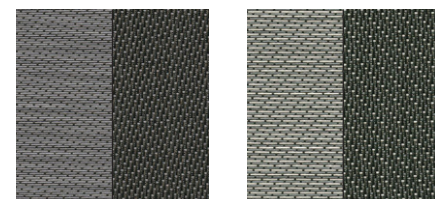
01 White 02 Beige-White



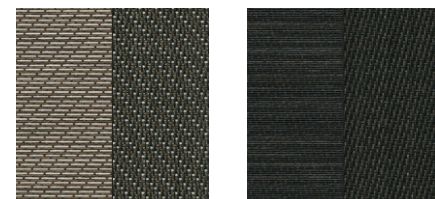
03 Pearl-White 05 Chestnut-White



06 Charcoal-White 07 Slate-Charcoal



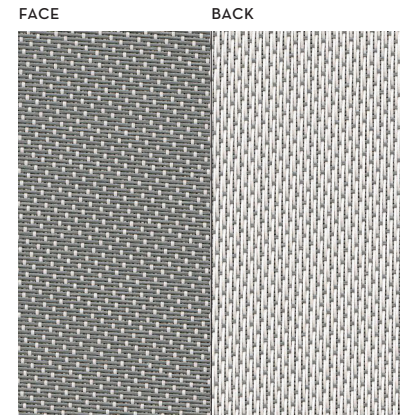
08 Grey-Charcoal 09 Taupe-Charcoal



10 Brown-Charcoal 11 Charcoal

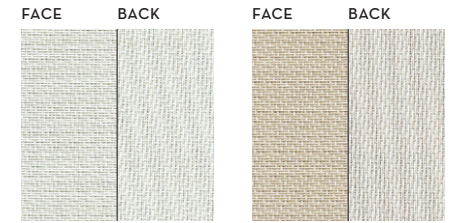
FABRIC SPECIFICATIONS

TexScreen 8103-SW2703



04 Grey-White

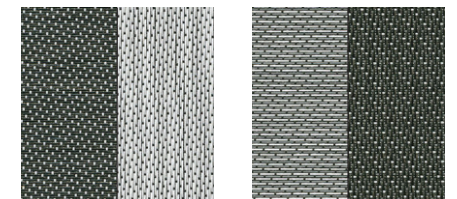
Width	126"
Content	64% Vinyl on Fiberglass 36% Fiberglass
Openness	3%
Regulatory	NFPA 701 California Title 19 CAN/ULC-S109-03 Small & Large Flame Test
Certifications	UL GREENGUARD® Gold Certified
Attributes	Printable Microban® Lead Free



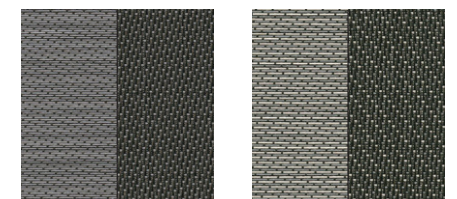
01 White 02 Beige-White



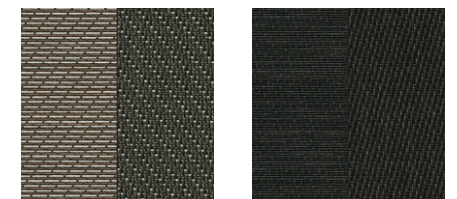
03 Pearl-White 05 Chestnut-White



06 Charcoal-White 07 Slate-Charcoal



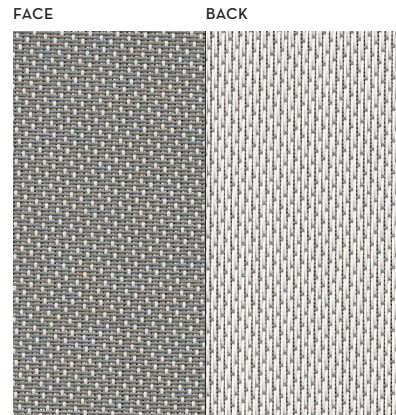
08 Grey-Charcoal 09 Taupe-Charcoal



10 Brown-Charcoal 11 Charcoal

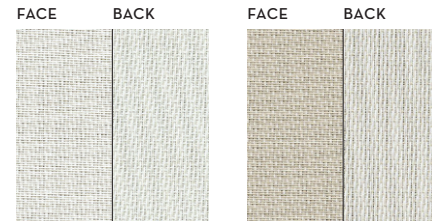
FABRIC SPECIFICATIONS

TexScreen 8105-SW2705



04 Grey-White

Width	126"
Content	66% Vinyl on Fiberglass 34% Fiberglass
Openness	5%
Regulatory	NFPA 701 California Title 19 CAN/ULC-S109-03 Small & Large Flame Test
Certifications	UL GREENGUARD® Gold Certified
Attributes	Printable Microban® Lead Free



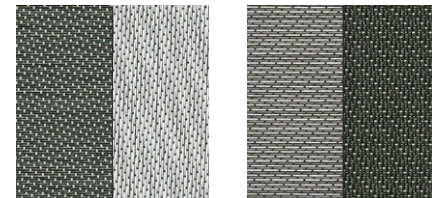
01 White

02 Beige-White



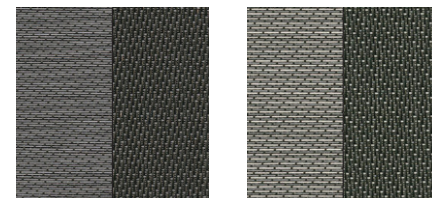
03 Pearl-White

05 Chestnut-White



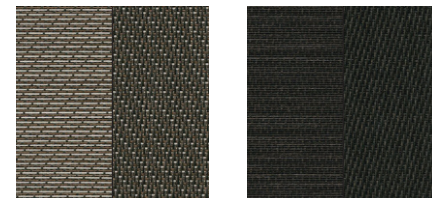
06 Charcoal-White

07 Slate-Charcoal



08 Grey-Charcoal

09 Taupe-Charcoal

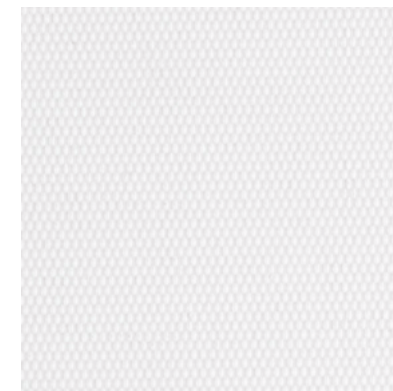


10 Brown-Charcoal

11 Charcoal

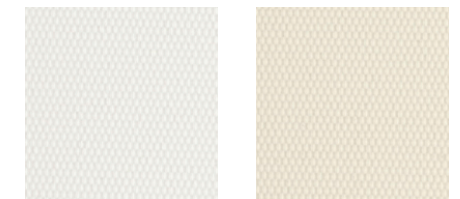
FABRIC SPECIFICATIONS

Delta FR-TeXOpaque 6200



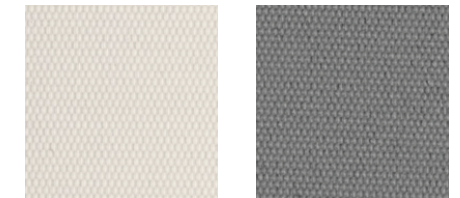
01 White-White

Width	118"
Content	100% Polyester
Openness	Blackout
Regulatory	NFPA 701 CAN/ULC-S109
Certifications	
Attributes	Printable PVC Free



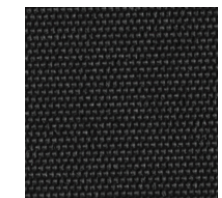
02 Off White-White

03 Vanilla-White



04 Pewter-White

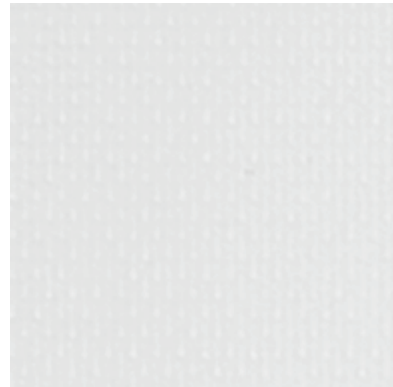
05 Light Grey



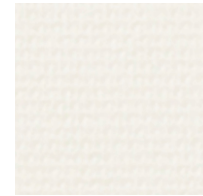
06 Anthracite-White

FABRIC SPECIFICATIONS

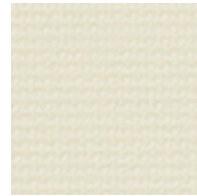
Versa-~~Tex~~Opaque 6500



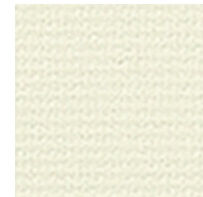
01 White-White



02 Pearl-White



03 Bone-White



04 Vanilla-White



05 Grey-White



06 Black-White

Width	72"
Content	75% PVC Coating 25% Fiberglass
Openness	Blackout
Regulatory	NFPA 701
Certifications	UL GREENGUARD® Gold Certified
Attributes	Printable Antibacterial Lead Free

FABRIC SPECIFICATIONS

PATTERN NAME	WIDTH	CONTENT	OPENNESS	REGULATORY	CERTIFICATIONS	ATTRIBUTES
10,000 Series - 10101	118"	70% PVC 30% Polyester	1%	NFPA 701	OEKO-TEX® Certified UL GREENGUARD® Gold Certified	Printable
10,000 Series - 10103	118"	70% PVC 30% Polyester	3%	NFPA 701	OEKO-TEX® Certified UL GREENGUARD® Gold Certified	Printable
10,000 Series - 10105	118"	70% PVC 30% Polyester	5%	NFPA 701	OEKO-TEX® Certified UL GREENGUARD® Gold Certified	Printable
E Screen 1%	122"	64% Vinyl 36% Fiberglass	1%	NFPA 701 California Title 19 CAN/ULC- S109-03 Small & Large Flame Test	RoHS - Lead Free UL GREENGUARD® Gold Certified	Printable Lead Free
E Screen 3%	122"	64% Vinyl 36% Fiberglass	3%	NFPA 701 California Title 19 CAN/ULC- S109-03 Small & Large Flame Test	RoHS - Lead Free UL GREENGUARD® Gold Certified	Printable Lead Free

PATTERN NAME	WIDTH	CONTENT	OPENNESS	REGULATORY	CERTIFICATIONS	ATTRIBUTES
E Screen 5%	122"	64% Vinyl 36% Fiberglass	5%	NFPA 701 California Title 19 CAN/ULC- S109-03 Small & Large Flame Test	RoHS - Lead Free UL GREENGUARD® Gold Certified	Printable Lead Free
Texscreen 8101 - SW2701	126"	64% Vinyl 36% Fiberglass	1%	NFPA 701 California Title 19 CAN/ULC- S109-03 Small & Large Flame Test	UL GREENGUARD® Gold Certified	Printable Microban® Lead Free
Texscreen 8103 - SW2703	126"	64% Vinyl on Fiberglass 36% Fiberglass	3%	NFPA 701 California Title 19 CAN/ULC- S109-03 Small & Large Flame Test	UL GREENGUARD® Gold Certified	Printable Microban® Lead Free
Texscreen 8105 - SW2705	126"	66% Vinyl on Fiberglass 34% Fiberglass	5%	NFPA 701 California Title 19 CAN/ULC- S109-03 Small & Large Flame Test	UL GREENGUARD® Gold Certified	Printable Microban® Lead Free
Delta FR - TexOpaque 6200	118"	100% Polyester	Blackout	NFPA 701 CAN/ULC-S109		Printable PVC Free
Versa - TexOpaque 6500	72"	75% PVC Coating 25% Fiberglass	Blackout	NFPA 701	UL GREENGUARD® Gold Certified	Printable, Antibacterial Lead Free

800.999.0400
[standardtextile.com/interiors](https://www.standardtextile.com/interiors)

©2024. Standard Textile Co., Inc. All rights reserved.

STANDARD
TEXTILE est. 1940